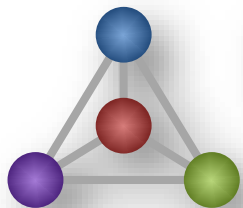




# The **Pragmatic** Family of Frameworks

V1.2 October 2015



**Pragmatic**  
ENTERPRISE ARCHITECTURE

Connecting the DOTS

# Introduction

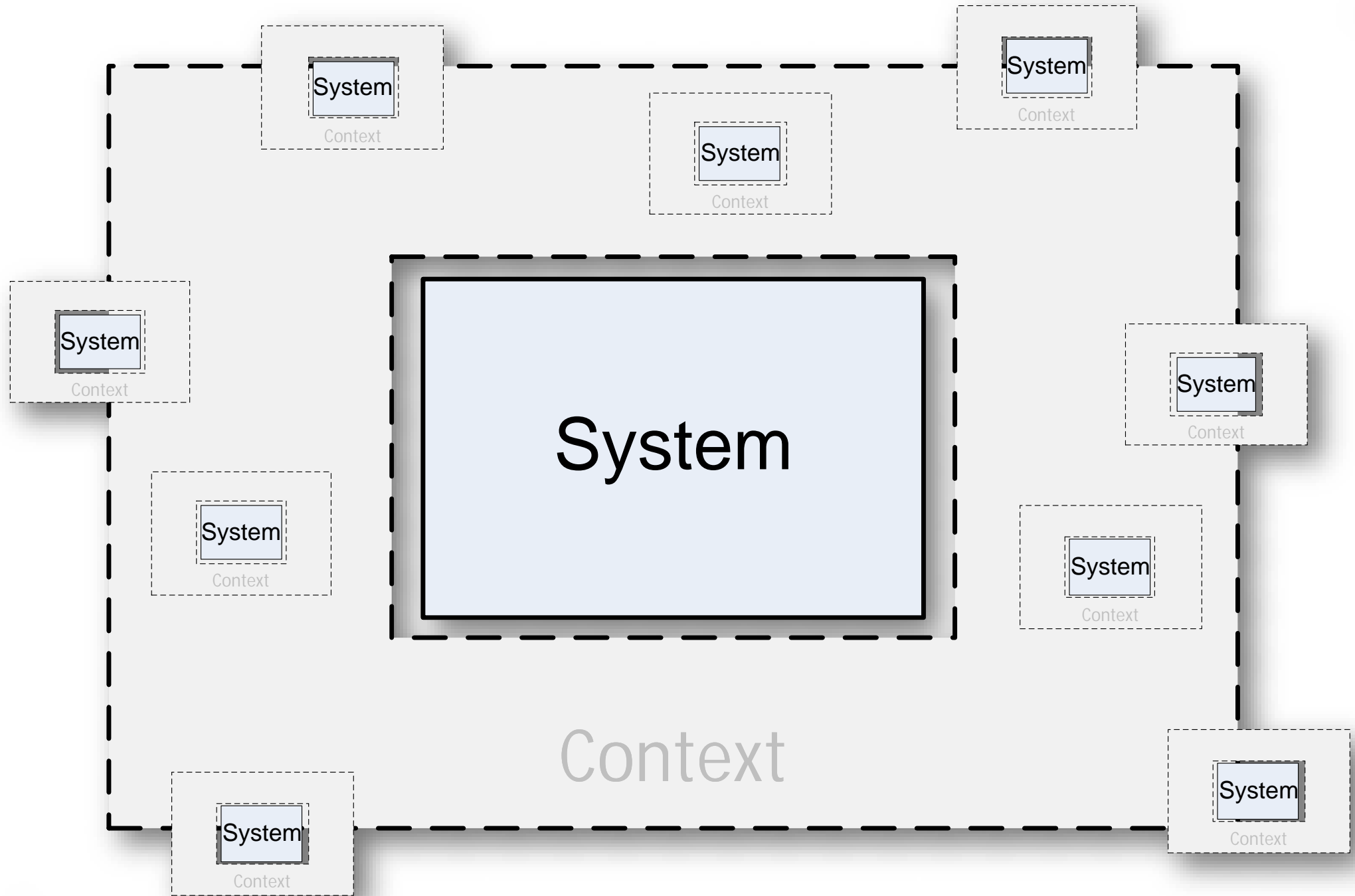


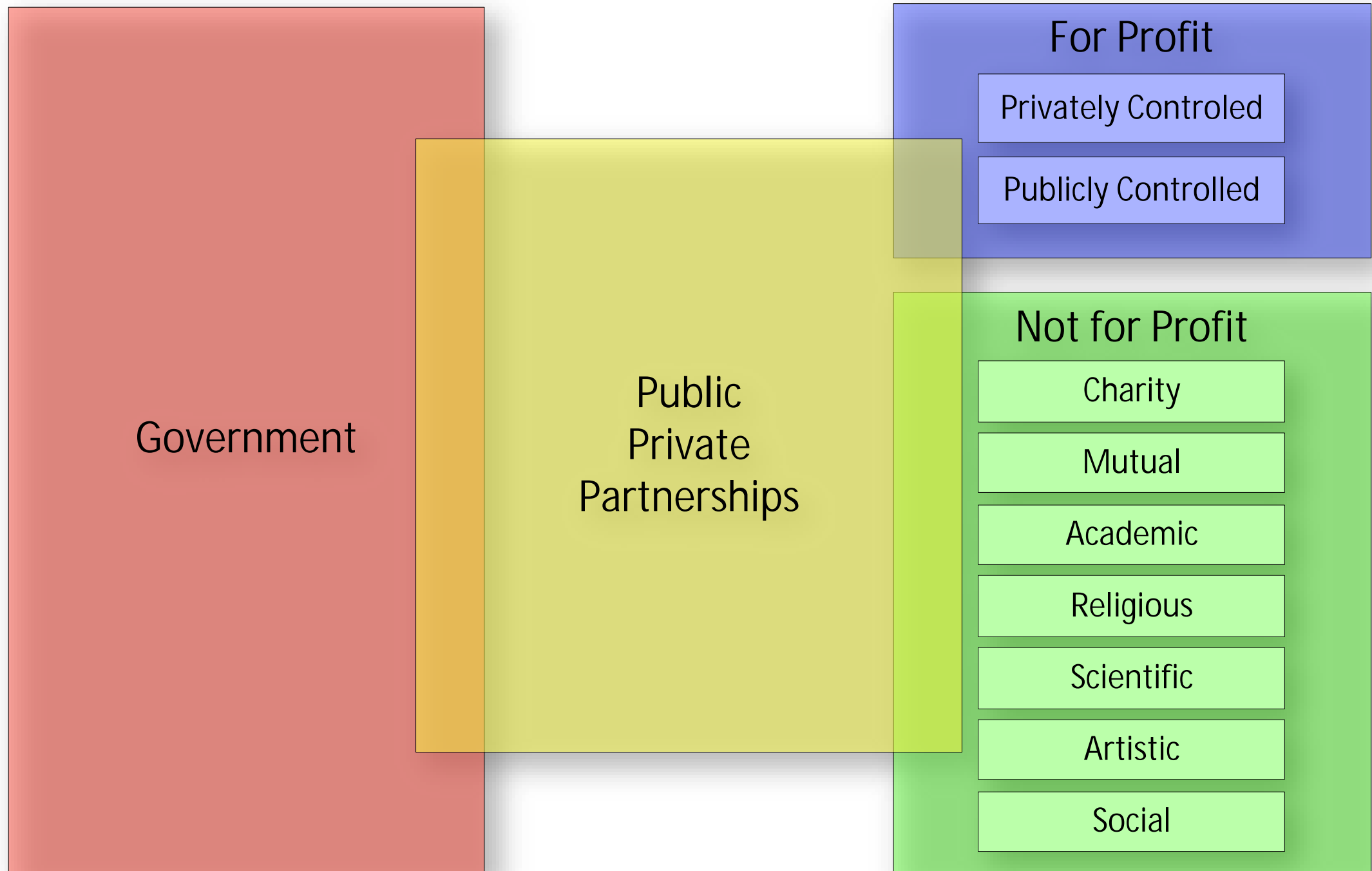
## FACT 1

I guarantee that SOME or ALL of the words used here will NOT be consistent with your current definitions.

## FACT 2

I guarantee that ALL of the words used here ARE consistent within this framework.





Transformation

Conversion

Change

Adjustment

Amendment

Modification

Makeover

Alteration

Renovation



- Research (non-profit)

Creates this

Best Practice related  
To Enterprise Transformation

Pragmatic  
Best Practice  
e.g.  
POET, PEAf,  
PEEF, etc.

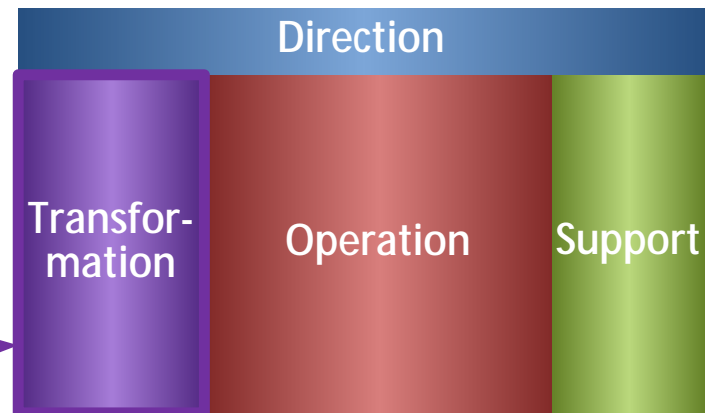
Other  
Best Practice  
e.g.  
PRINCE2, MSP,  
TOGAF, etc.

Uses this



- Consulting
- Training
- Mentoring
- Publishing

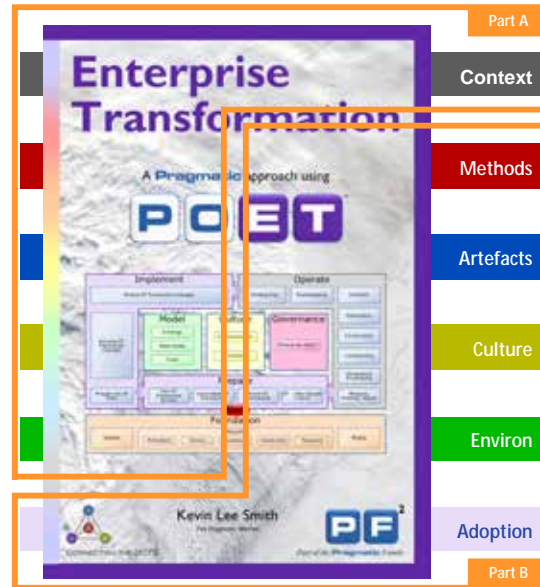
To mature this



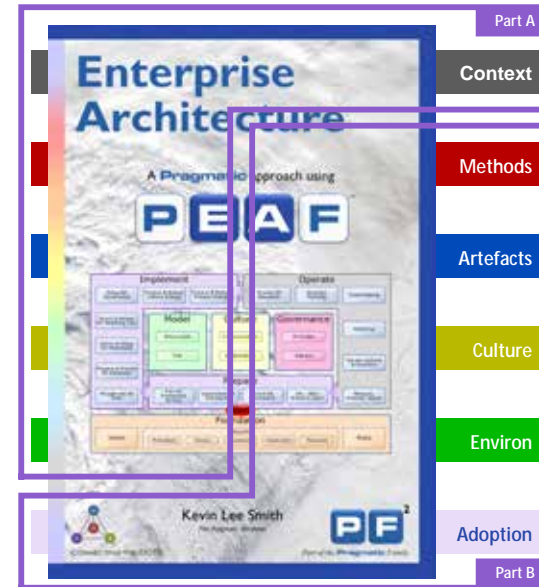
Enterprises



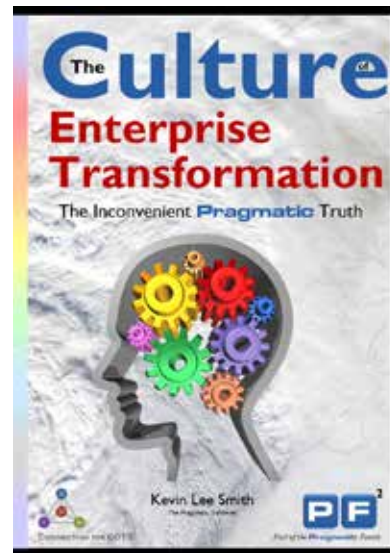
2 day  
Certification  
(or self-study)



2 day  
Certification  
(or self-study)



### 1 day Courses



### 1 day Workshops





# Foundation

Training Course

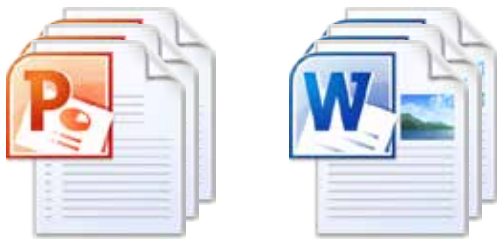


# Certified

Training Course



Toolkit

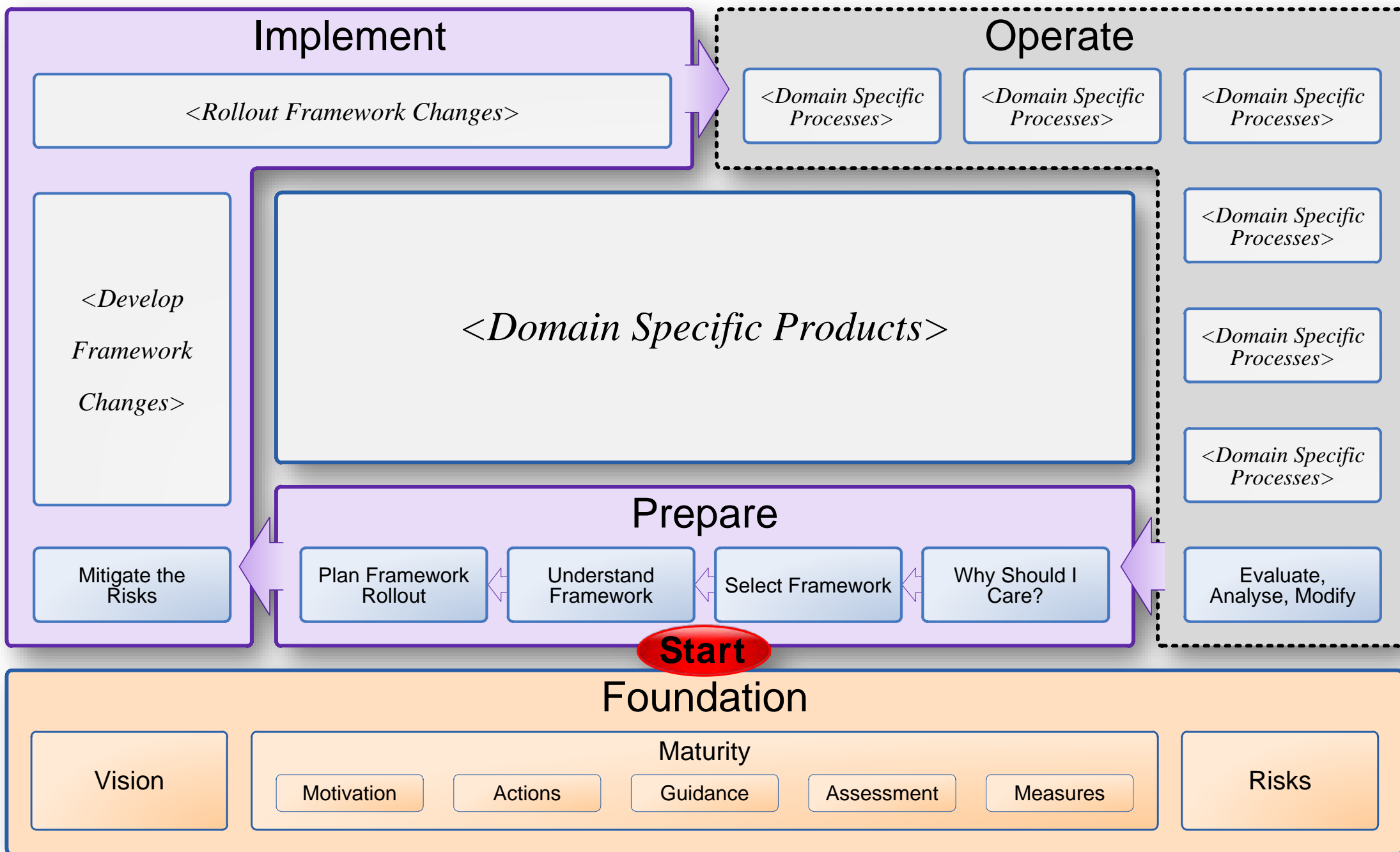


Graphics

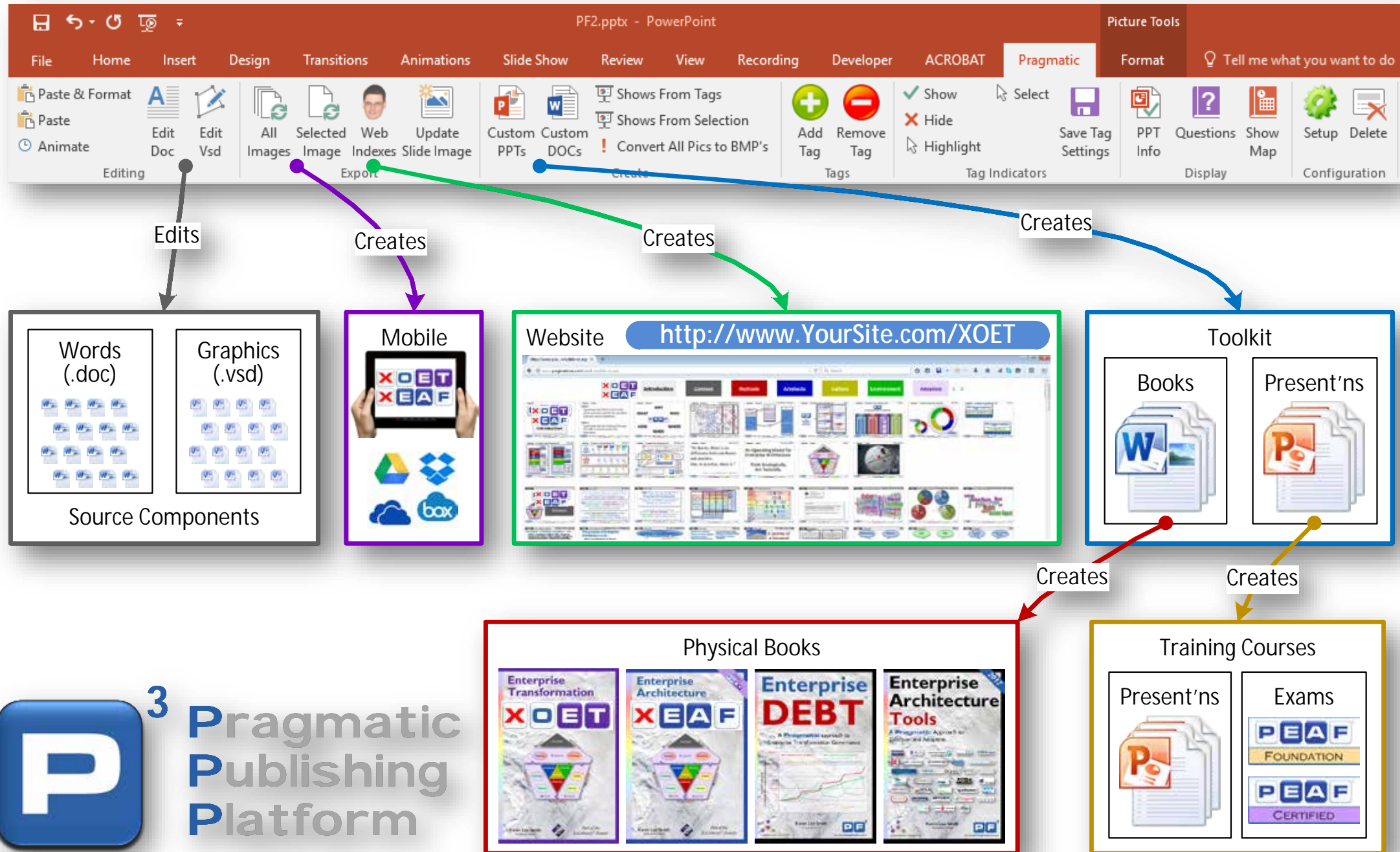


Supplementary





# Introduction Overview > Pragmatic Publishing Platform



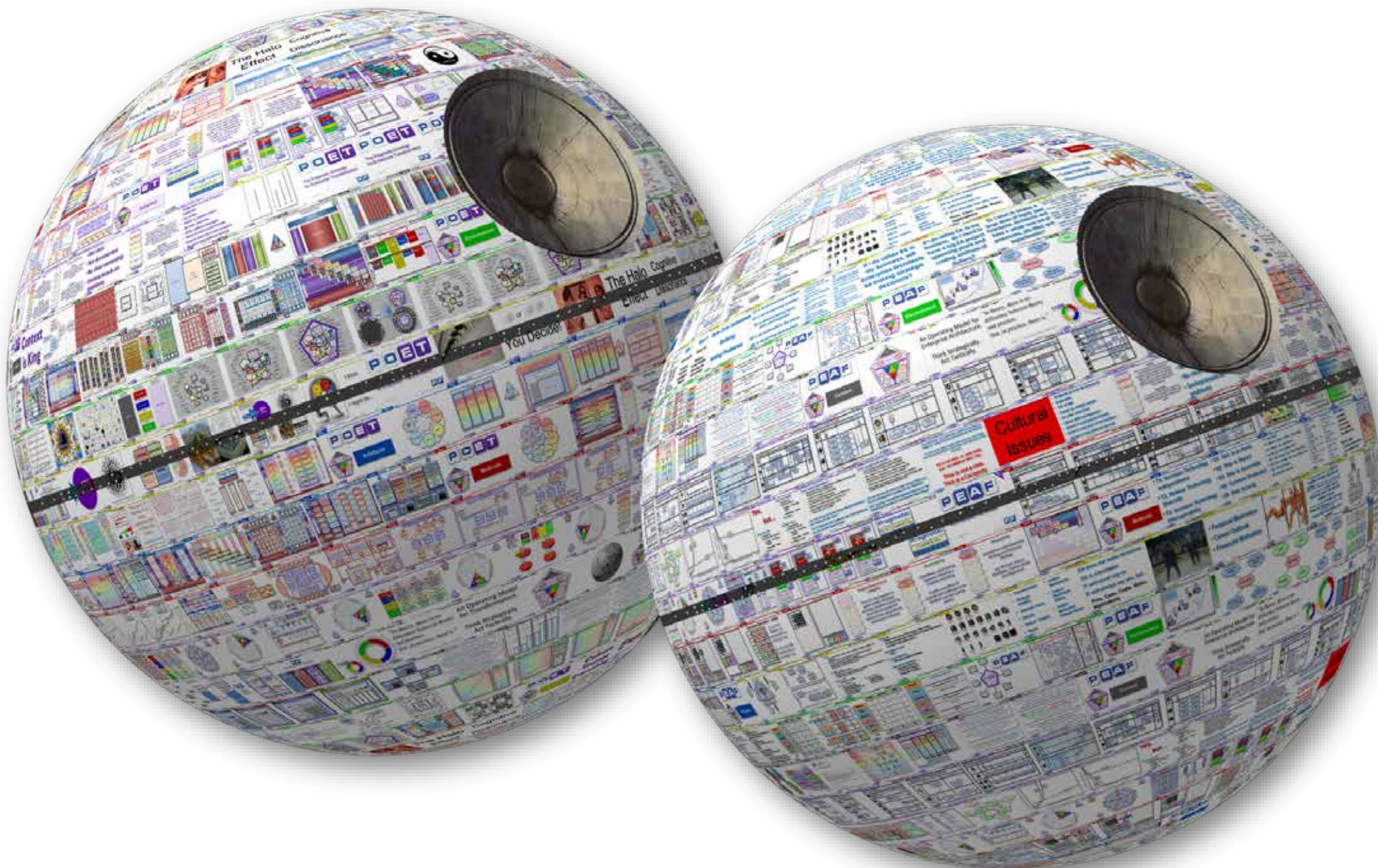
**P<sup>3</sup>** Pragmatic Publishing Platform

“In theory, there is no difference between theory and practice.

But, in practice, there is.”

*- Jan L. A. van de Snepscheut / Yogi Berra*





# Pragmatic

## Non-Commercial

L I C E N S E

- >300 Companies
- >100 Government Bodies
- >50 Academic Institutions
- >2,400 Individuals

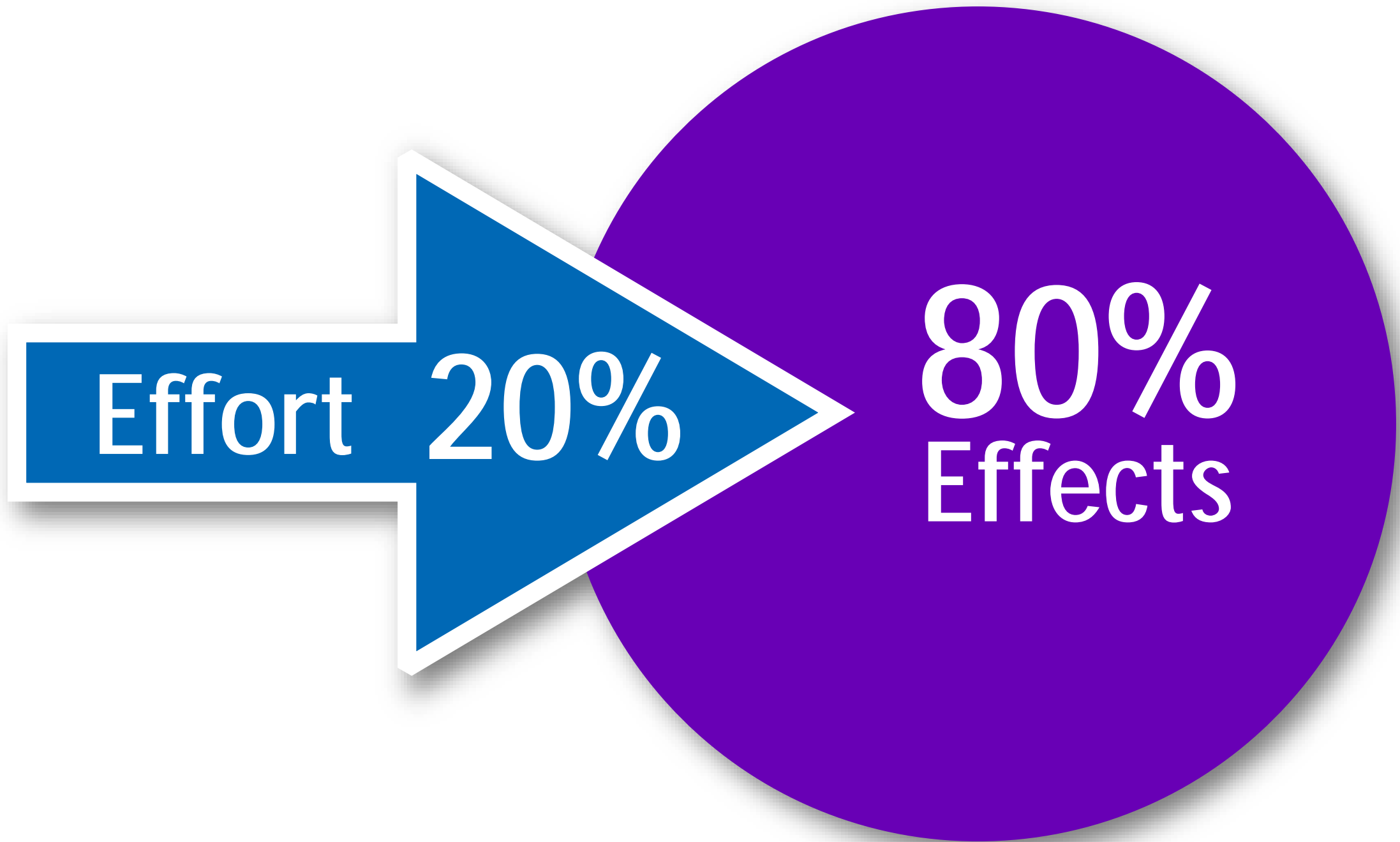
# Pragmatic

## Commercial

L I C E N S E

- >10 Consultancies
- >10 Training Providers
- >10 Tool Vendors

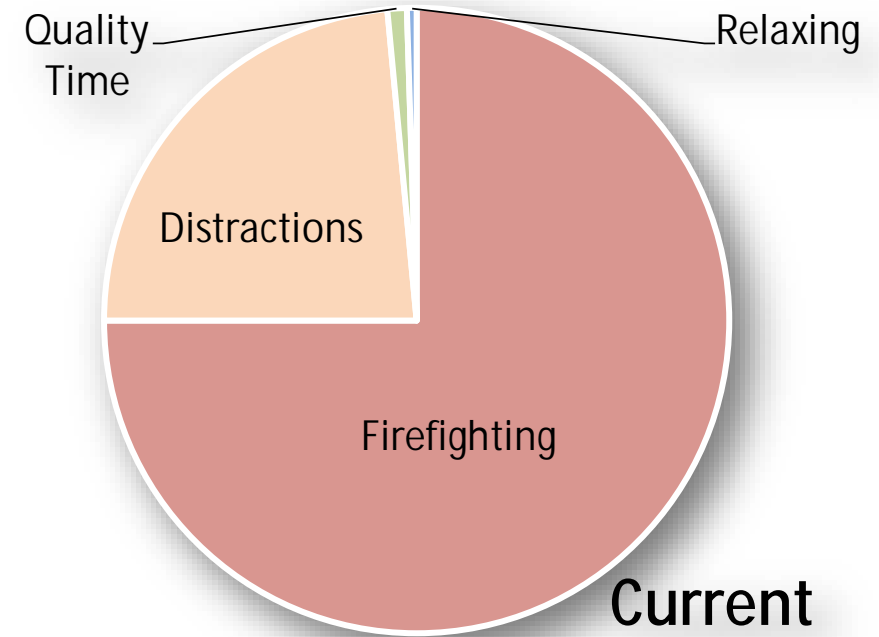
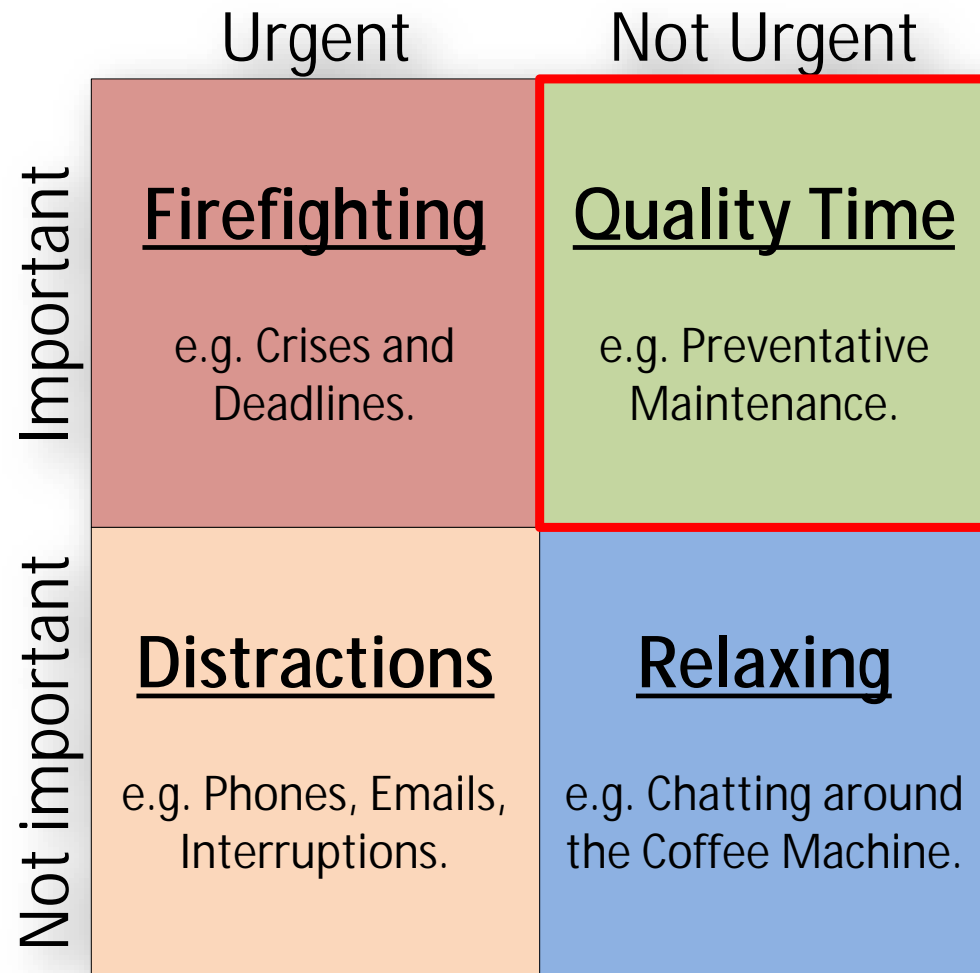
As at Q3/2016









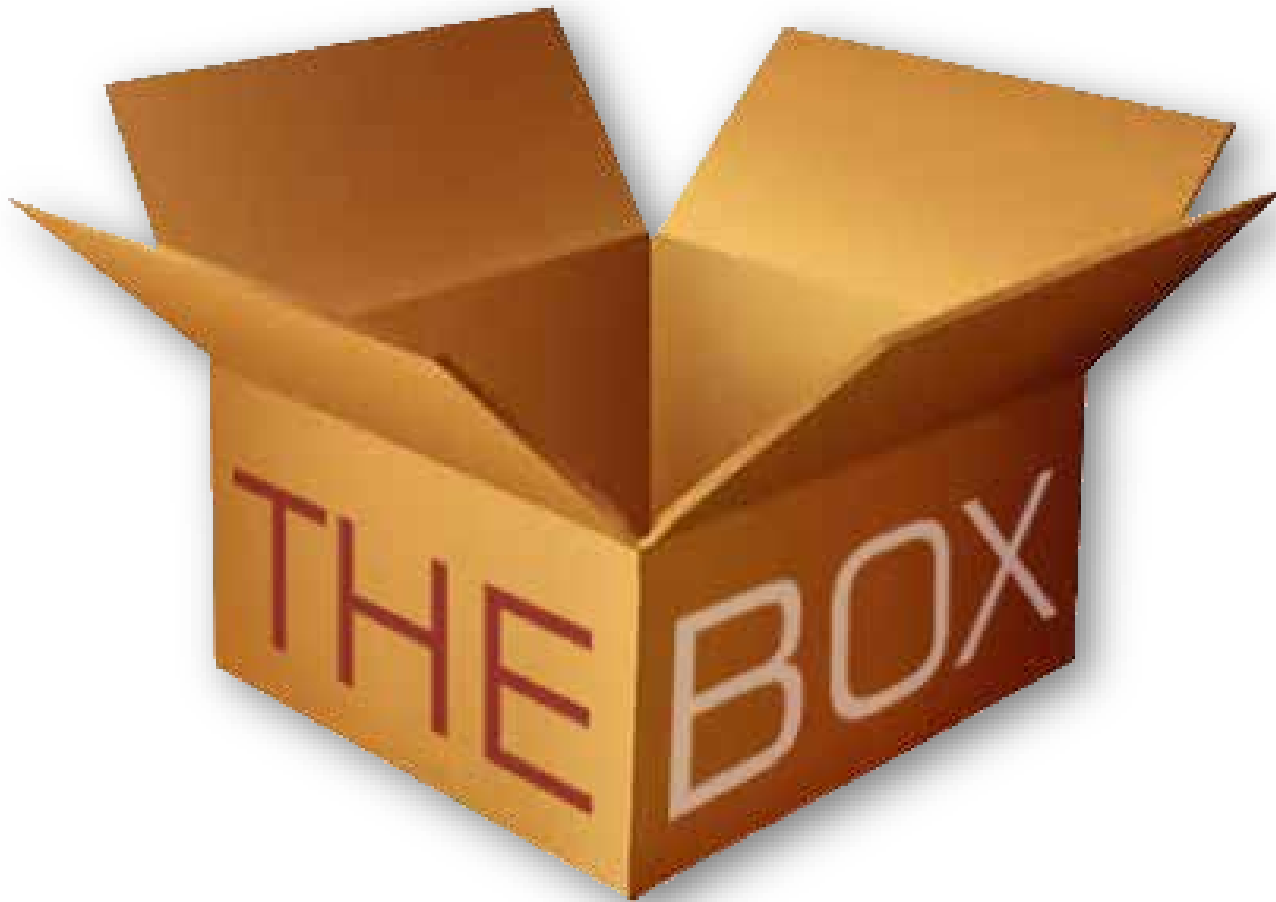


# Introduction

## What is Pragmatism? > Fundamentals



t h i n k i n g



Effectiveness

Effectiveness

Effectiveness

Effectiveness

Efficiency

Efficiency

Efficiency

Efficiency

Thinking

Thinking

Thinking

Thinking

Quality Time

Quality Time

Quality Time

Quality Time

Fundamentals

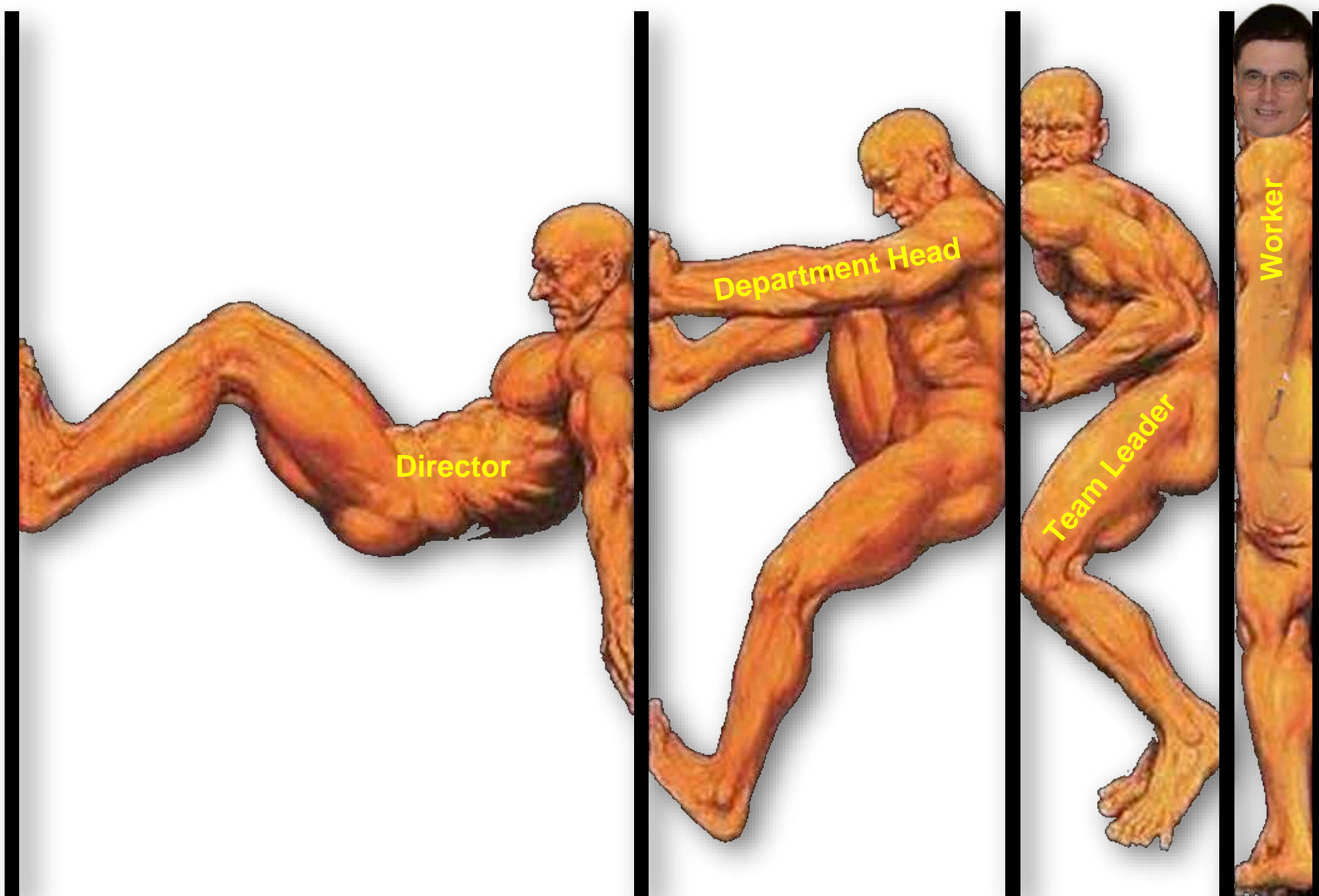
Fundamentals

Fundamentals

Fundamentals



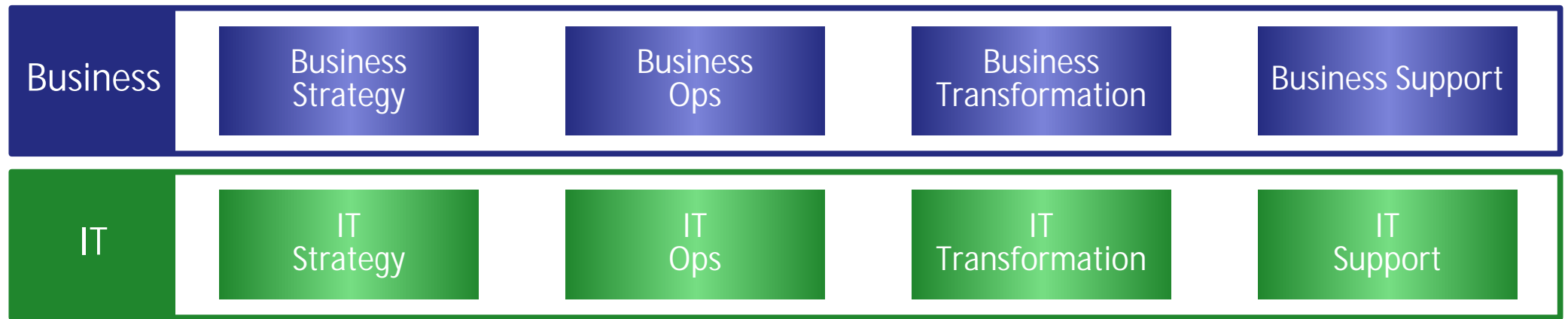




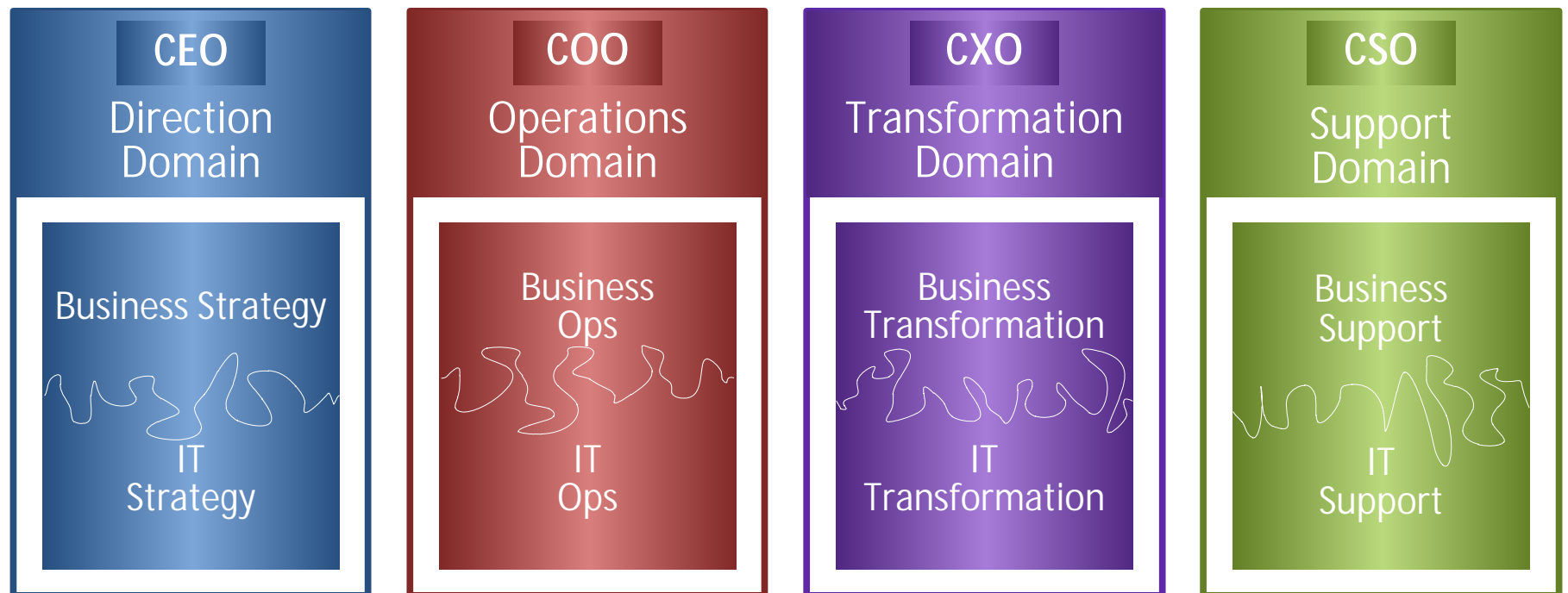
# Introduction

Ontologies > Enterprise > Paradigm Shift

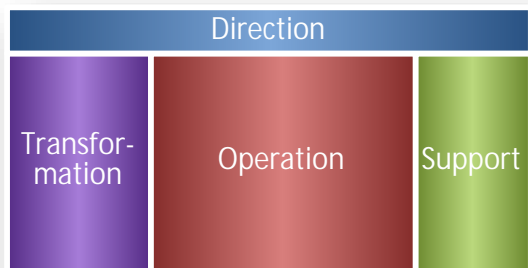
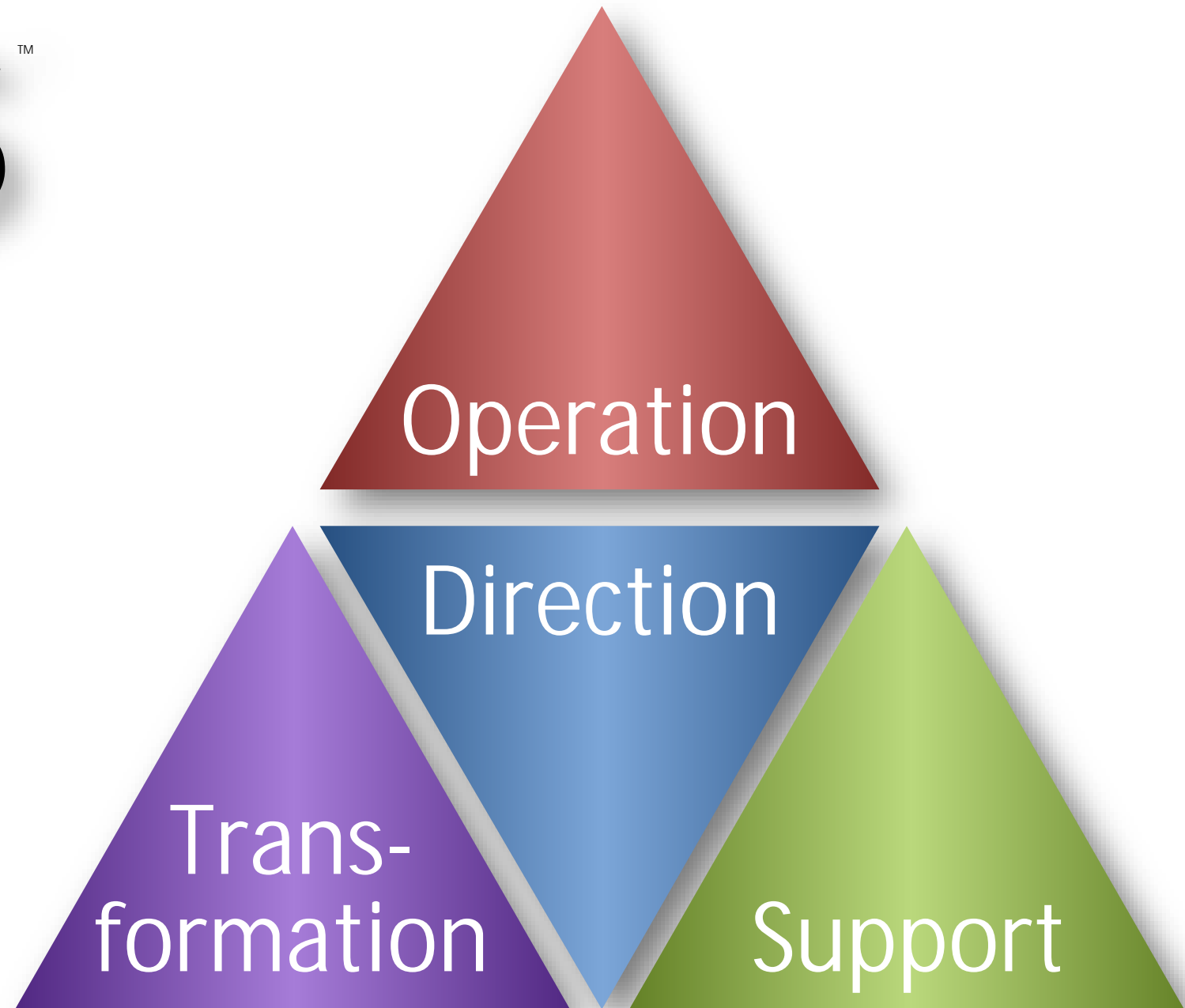
*Plate A – Normal View*

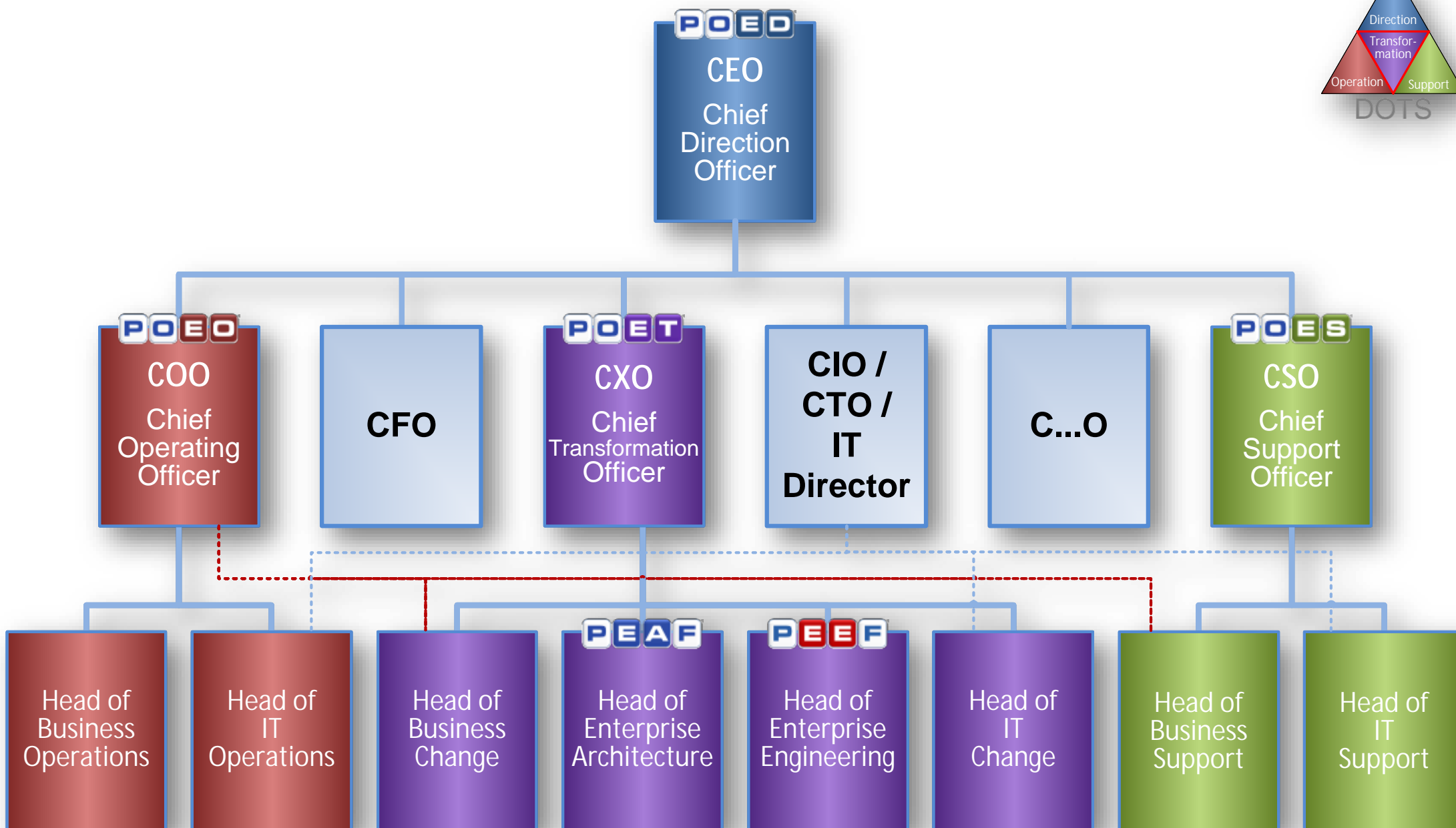
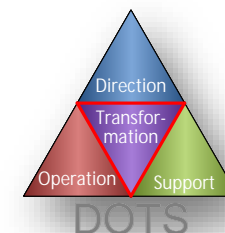


*Plate B*  
*Pragmatic View*

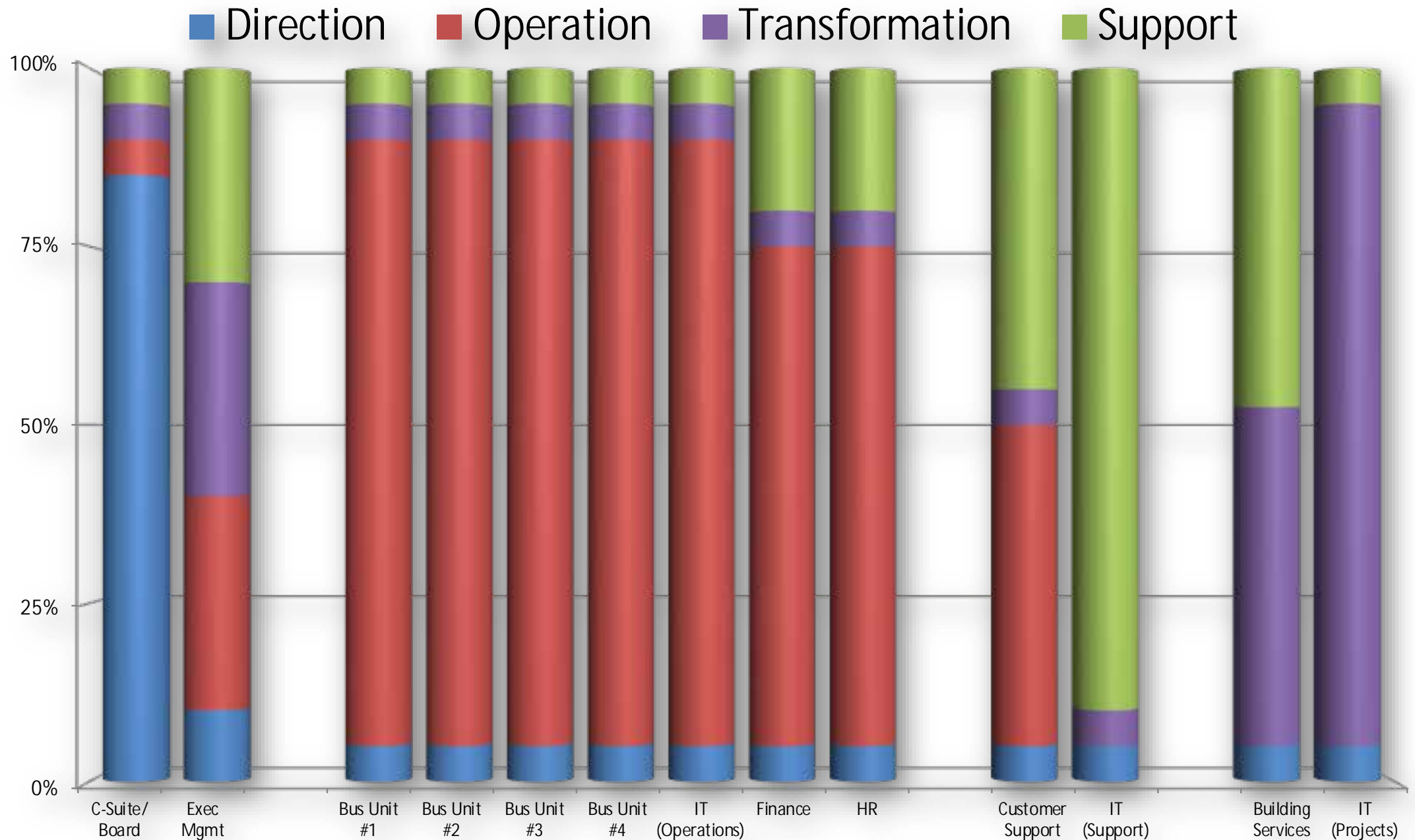


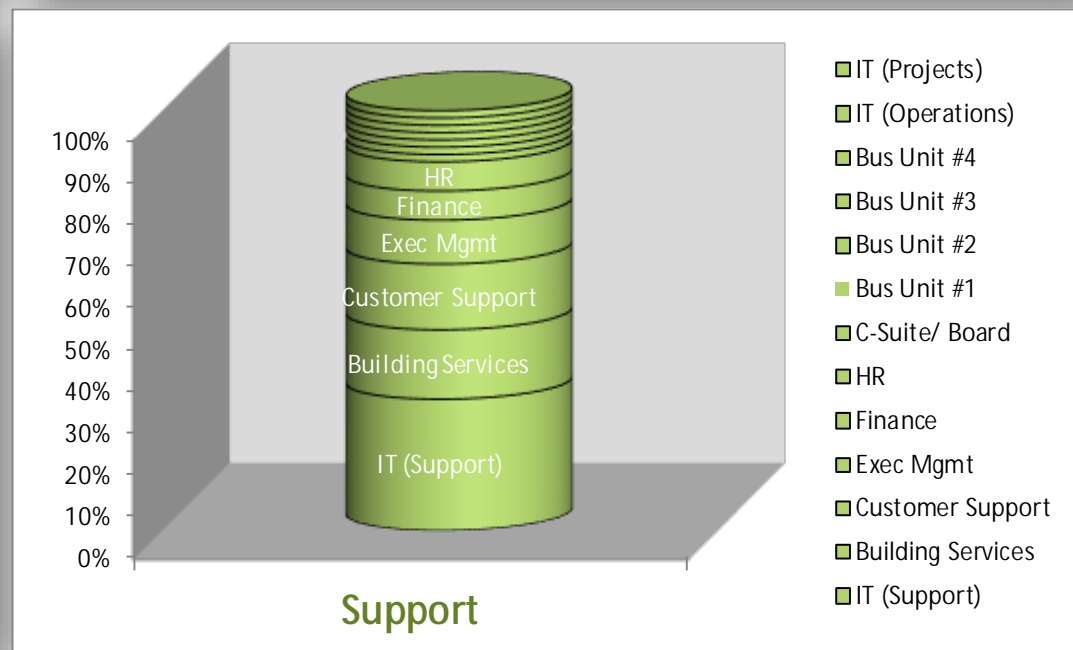
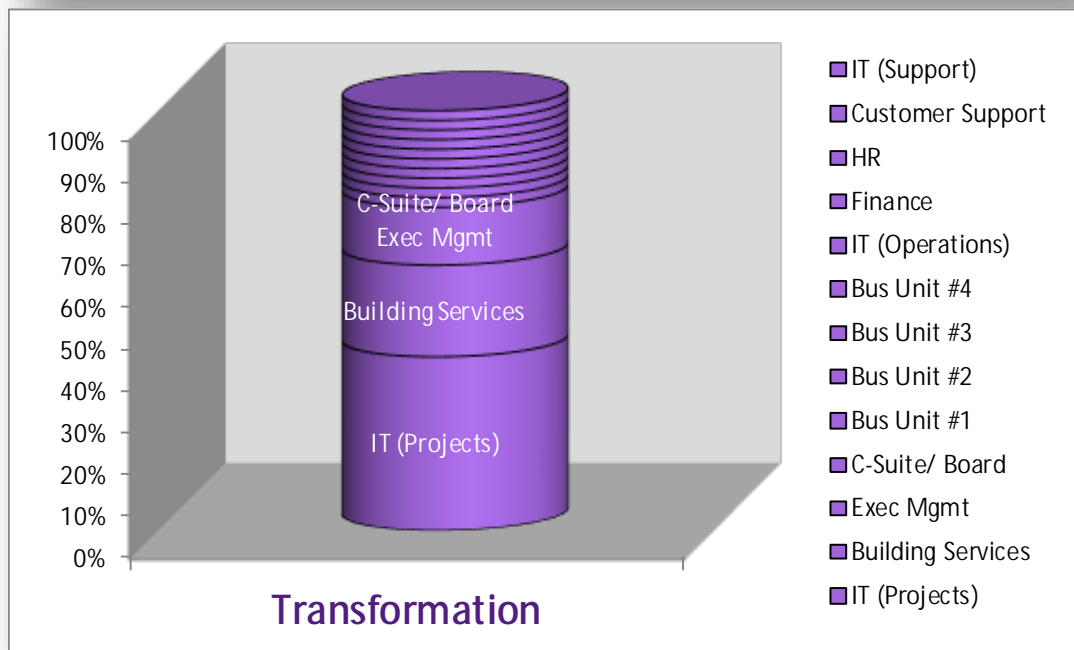
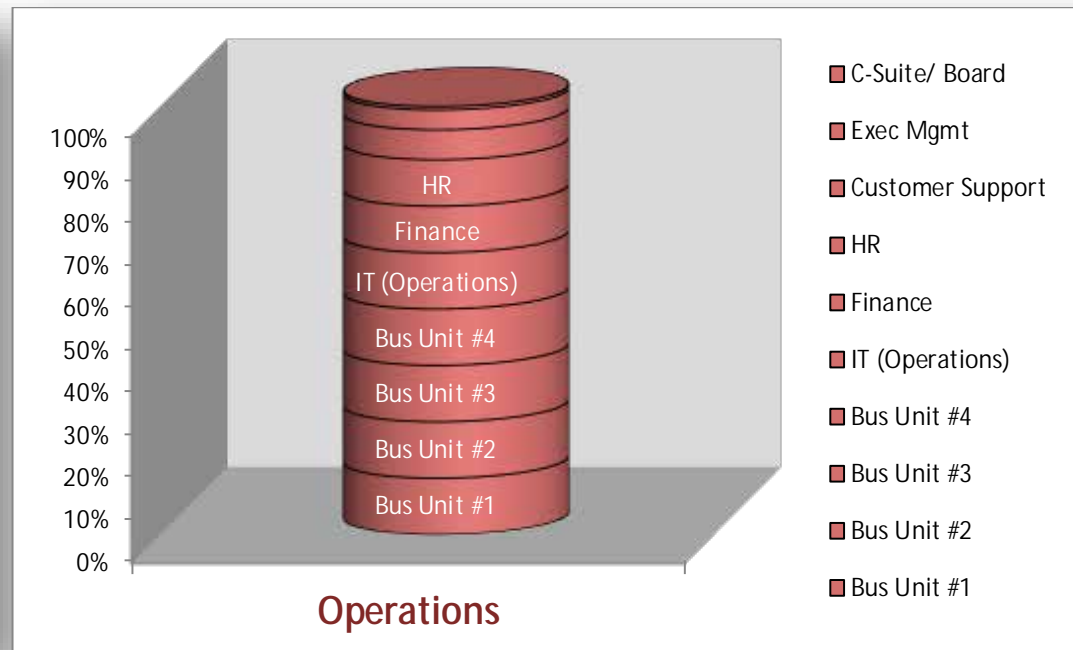
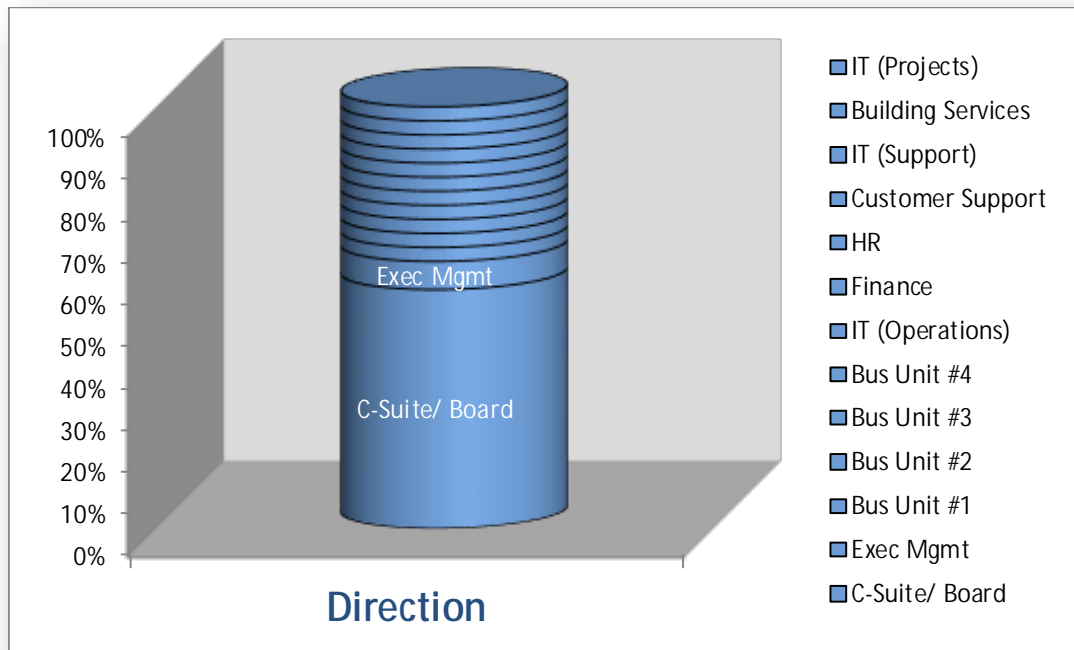
# DOTS™



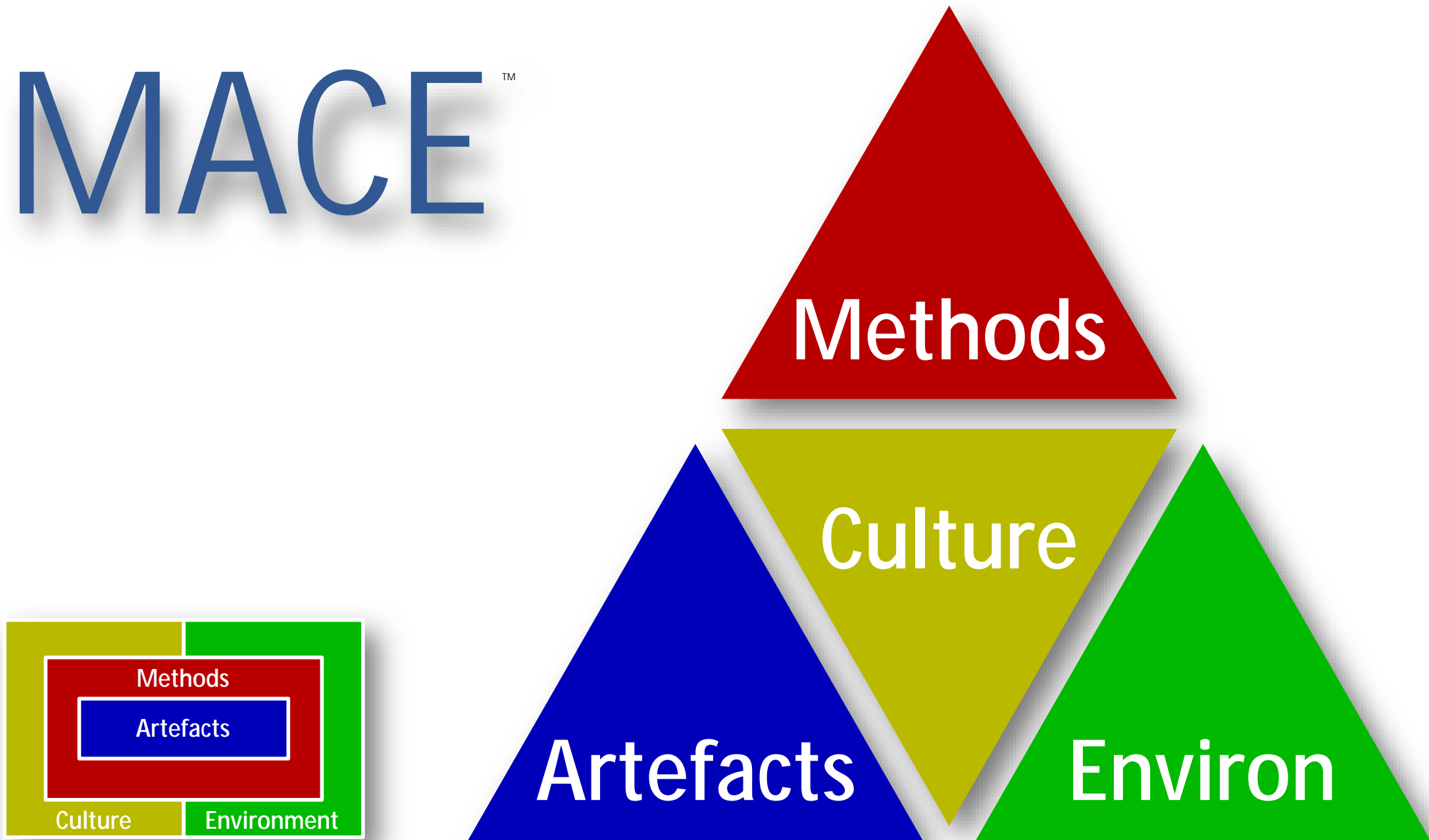




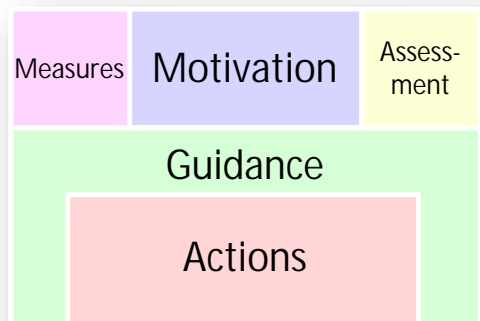
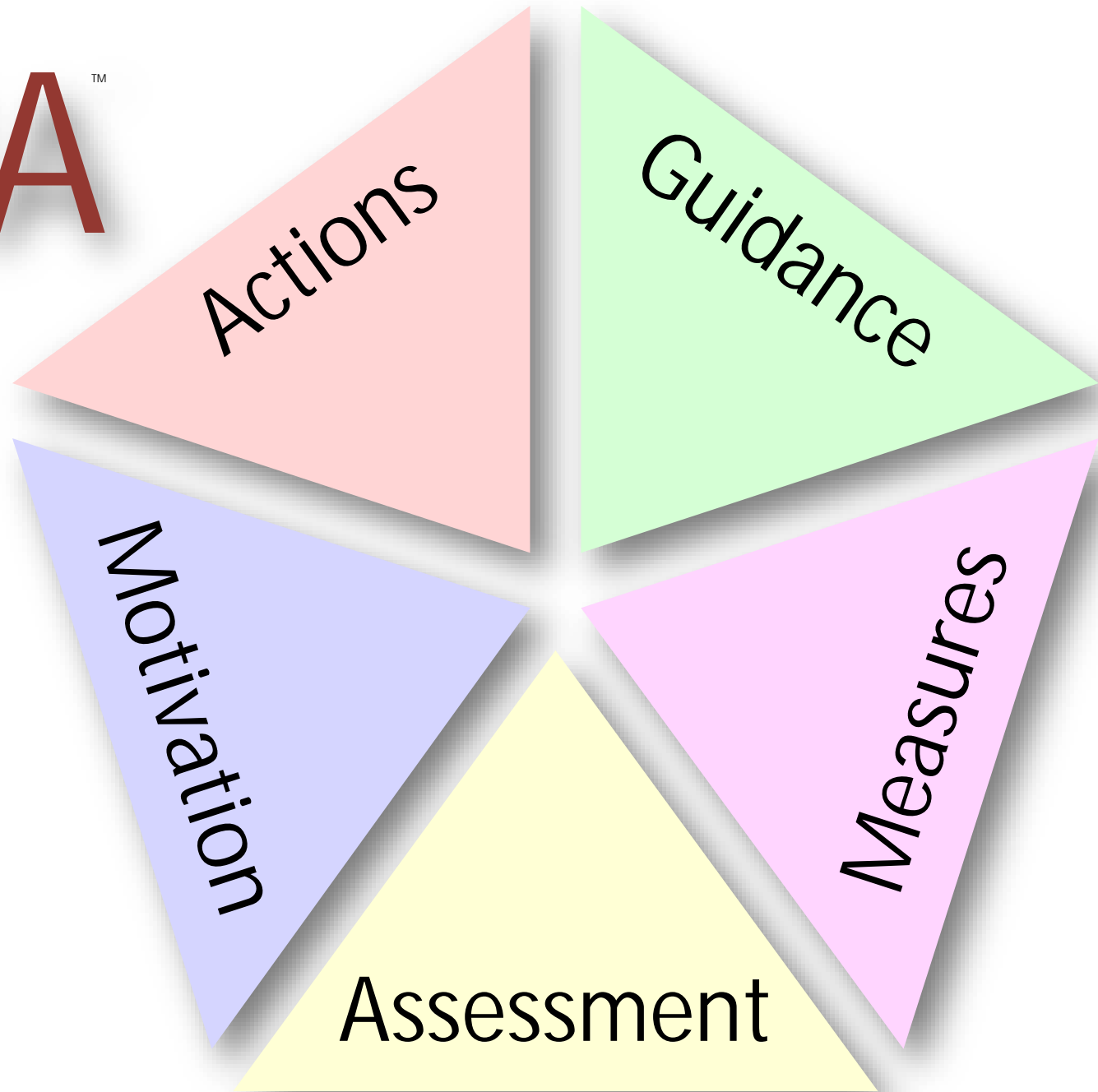




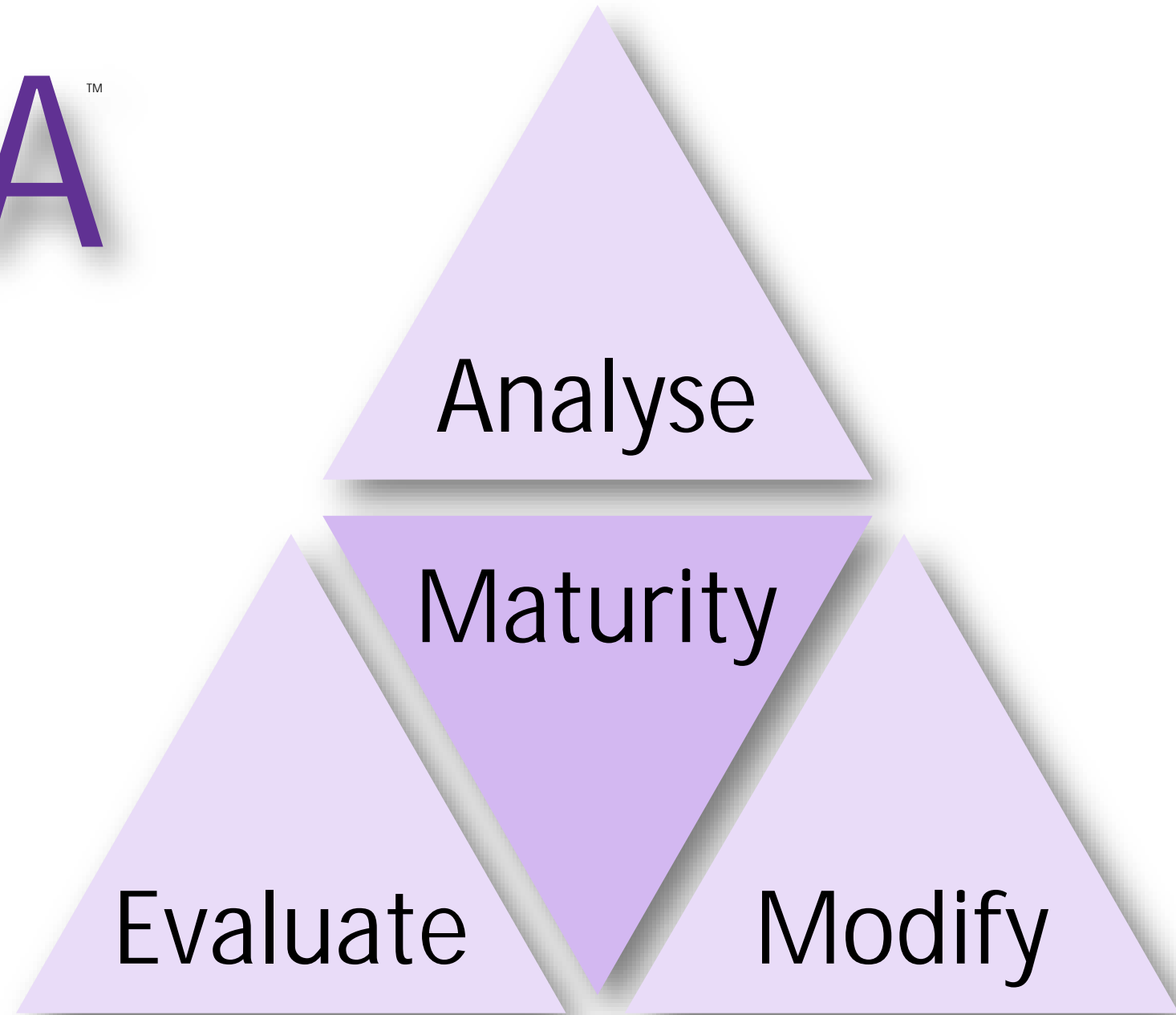
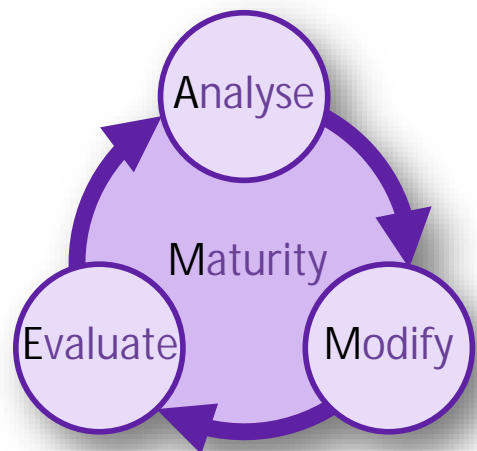
# MACE<sup>TM</sup>

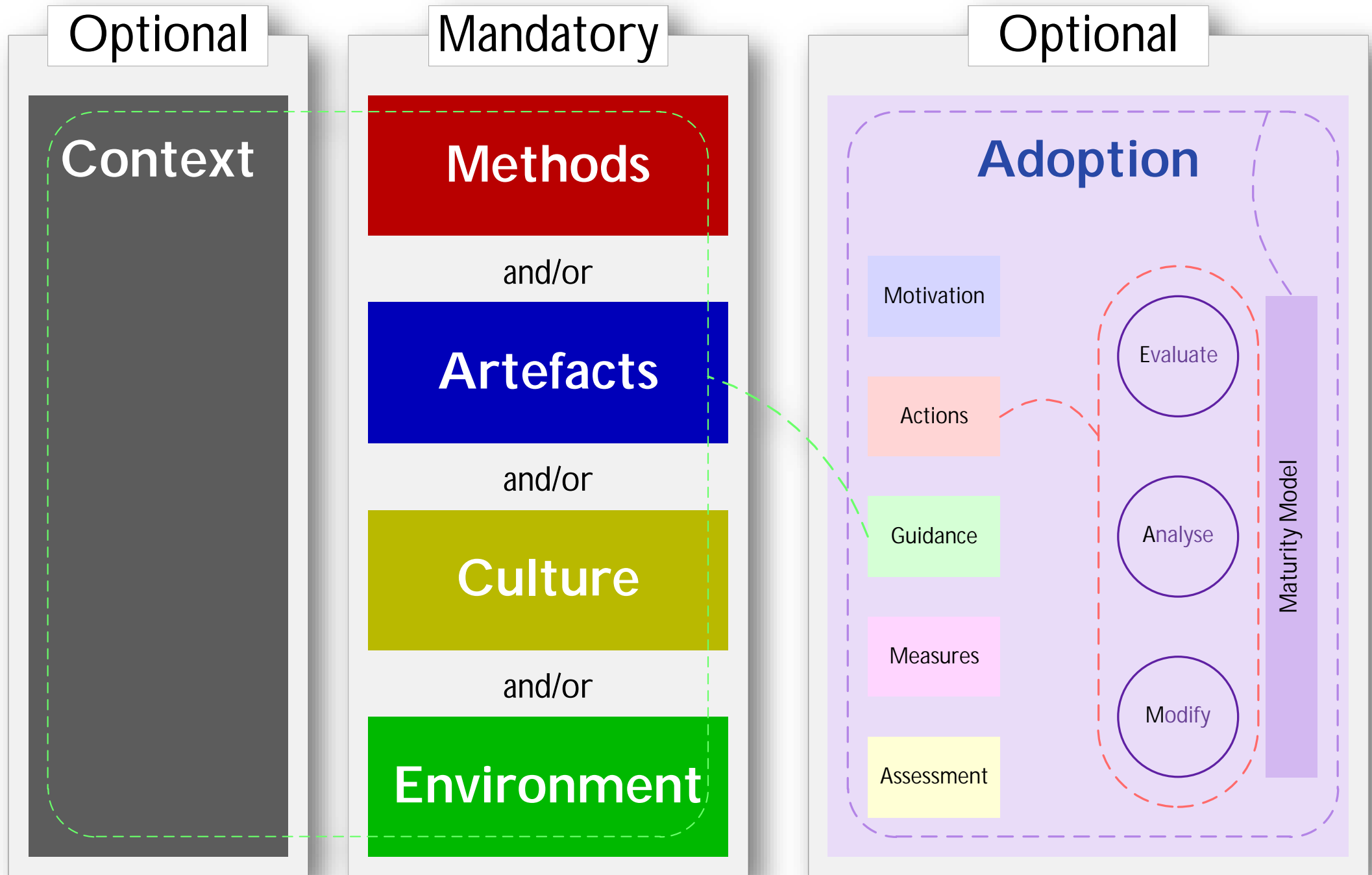


# MAGMA™



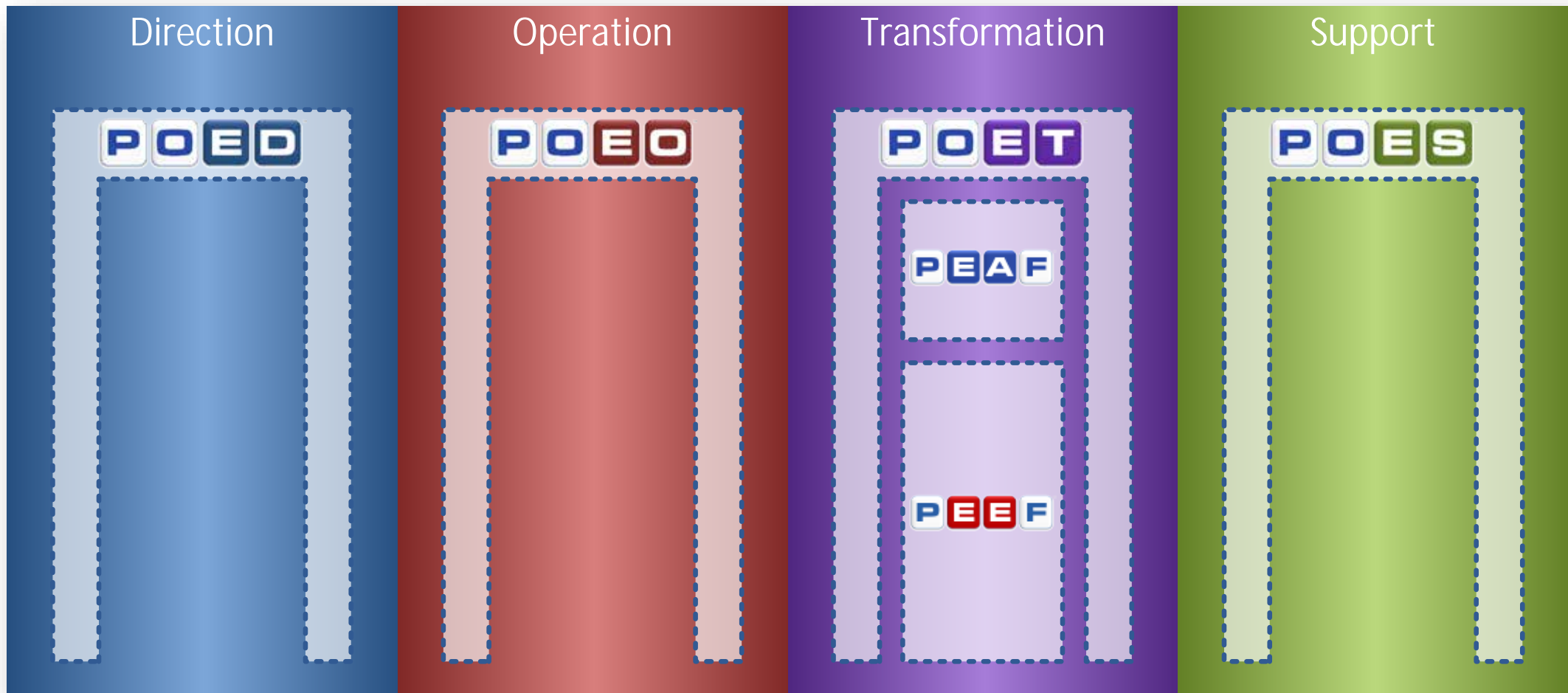
# EMMA<sup>TM</sup>





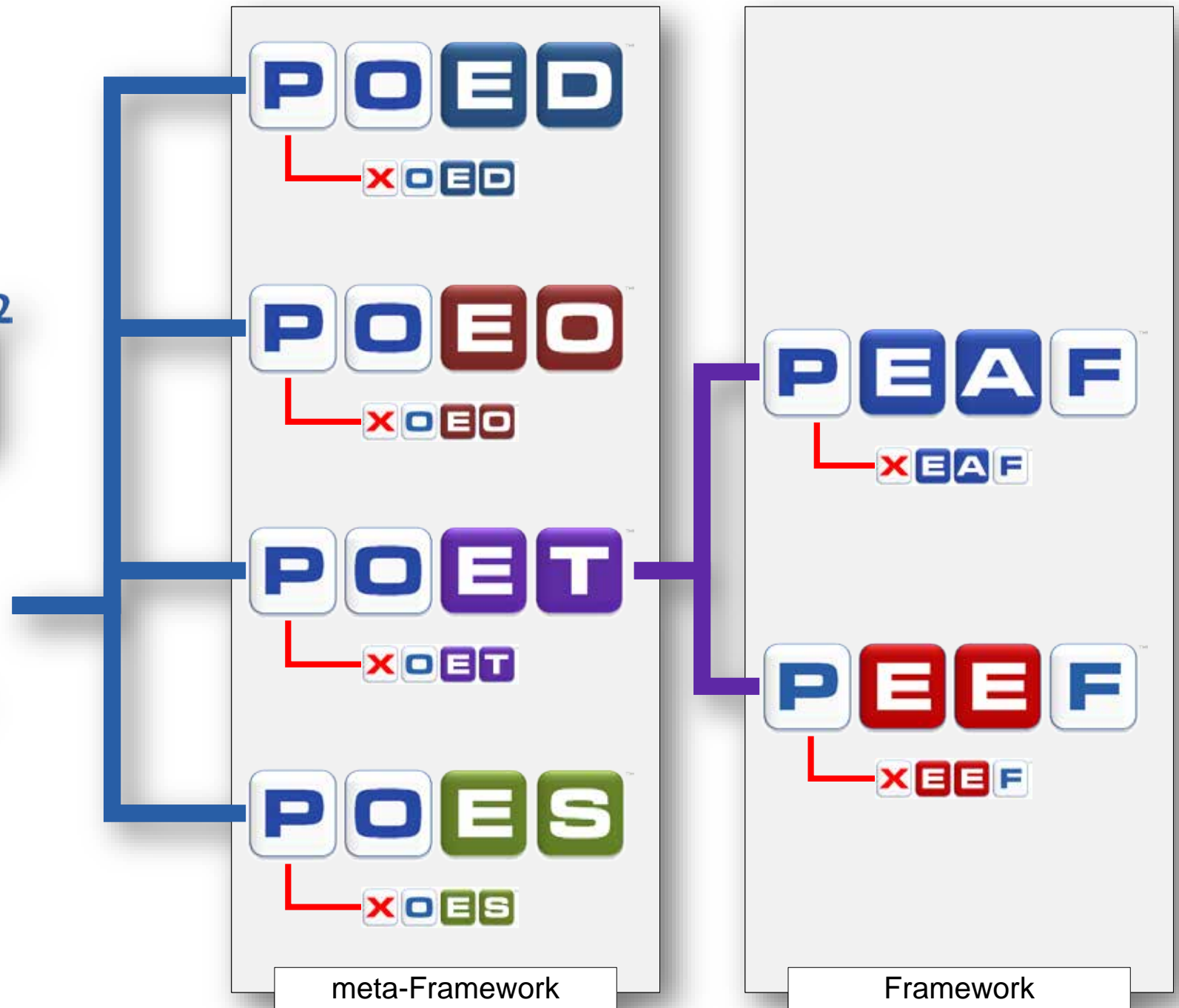


## The Pragmatic Family of Frameworks

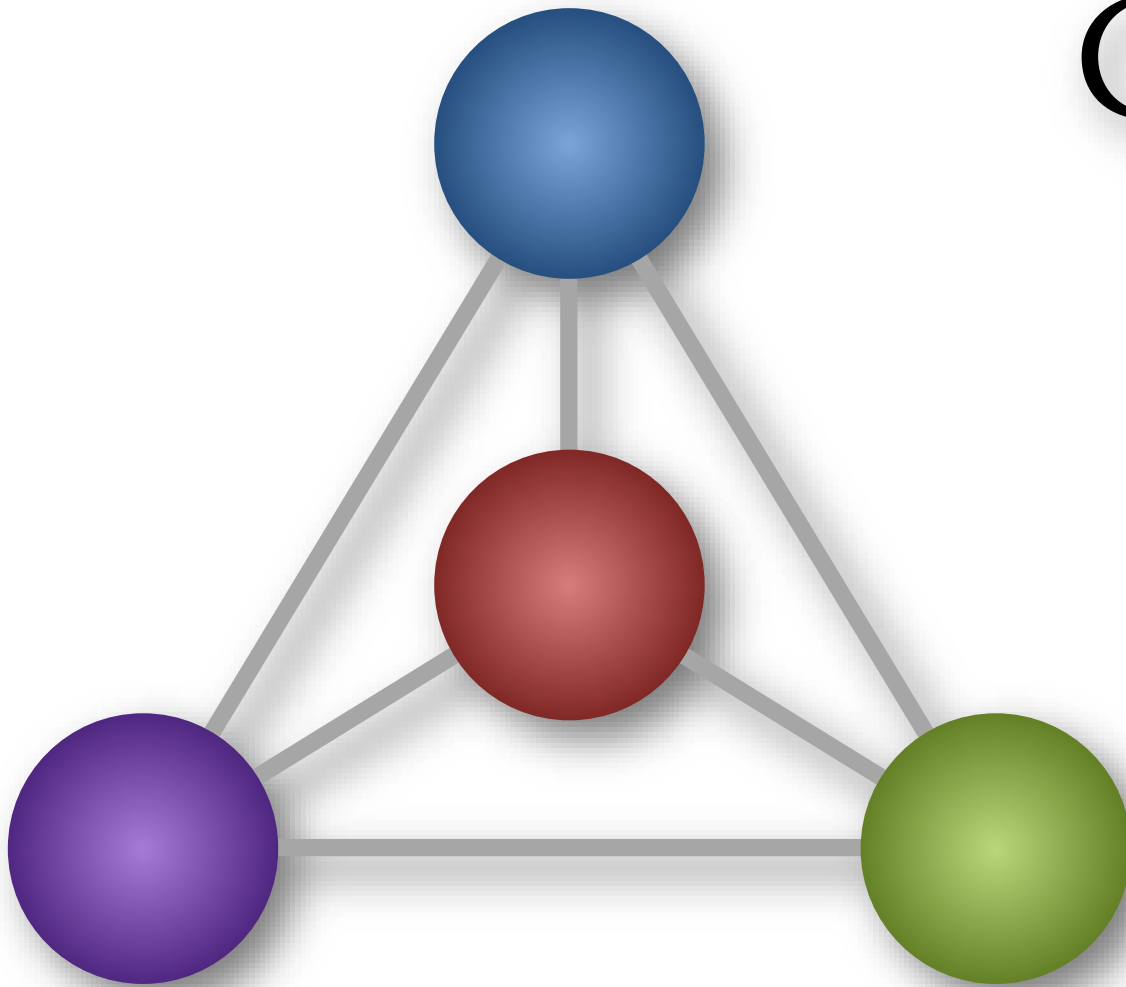




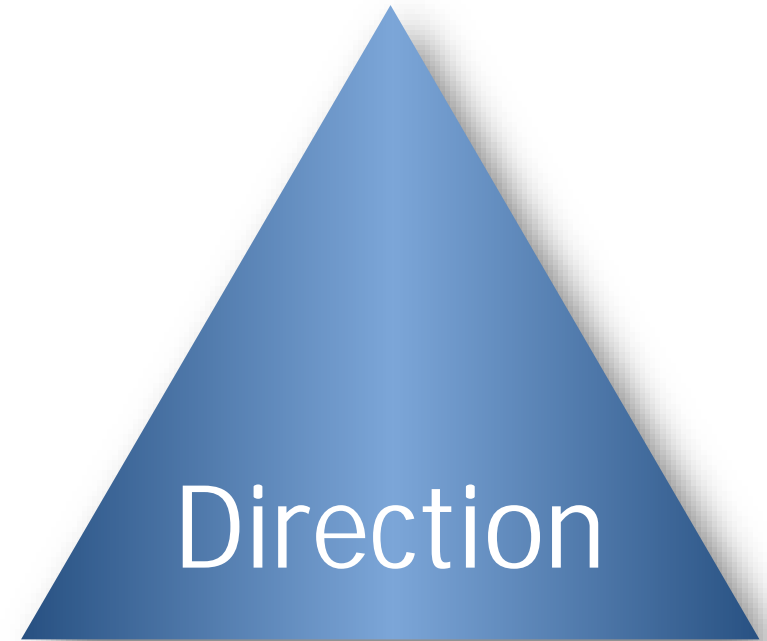
The  
Pragmatic  
Family of  
Frameworks



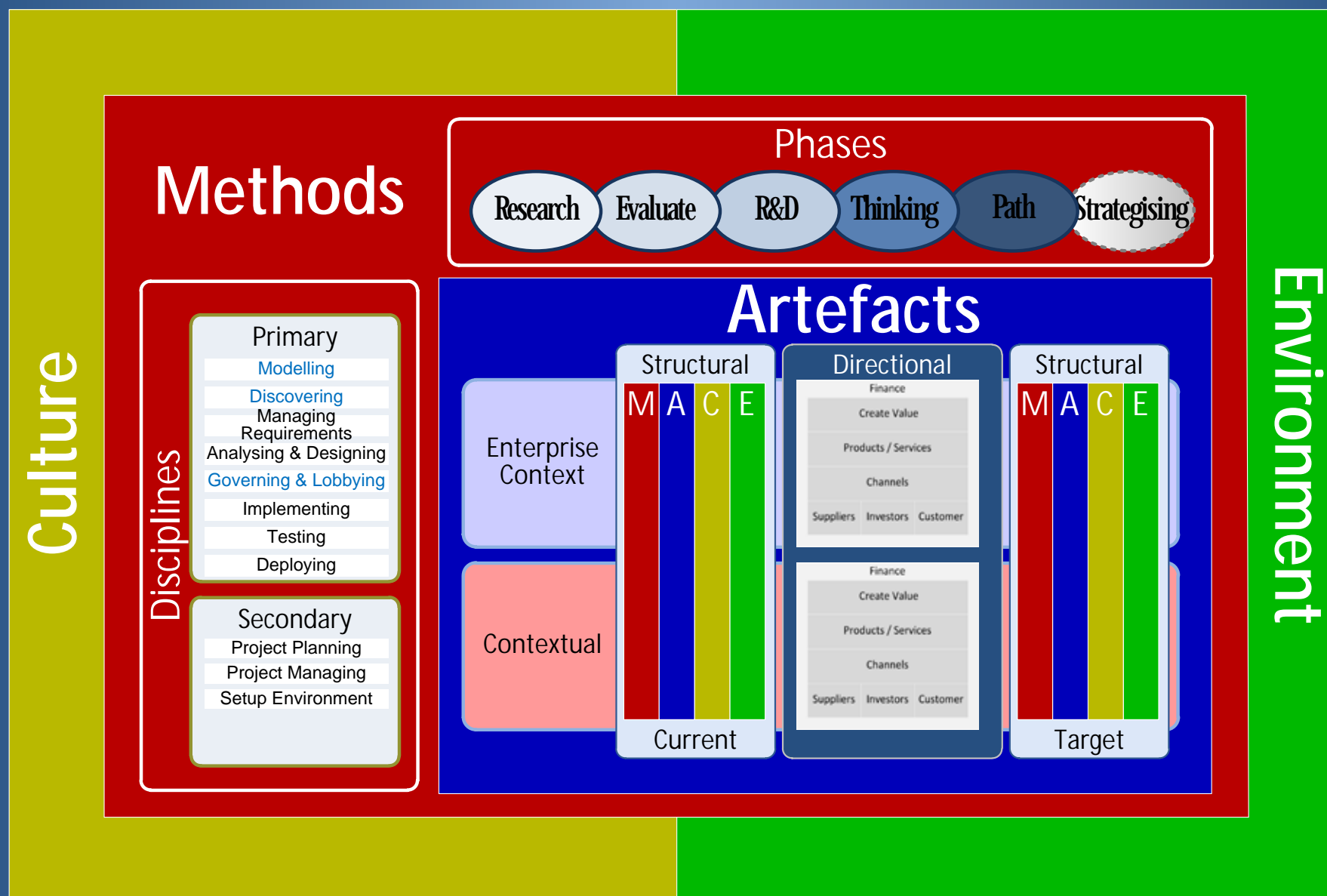




# Connecting the DOTS

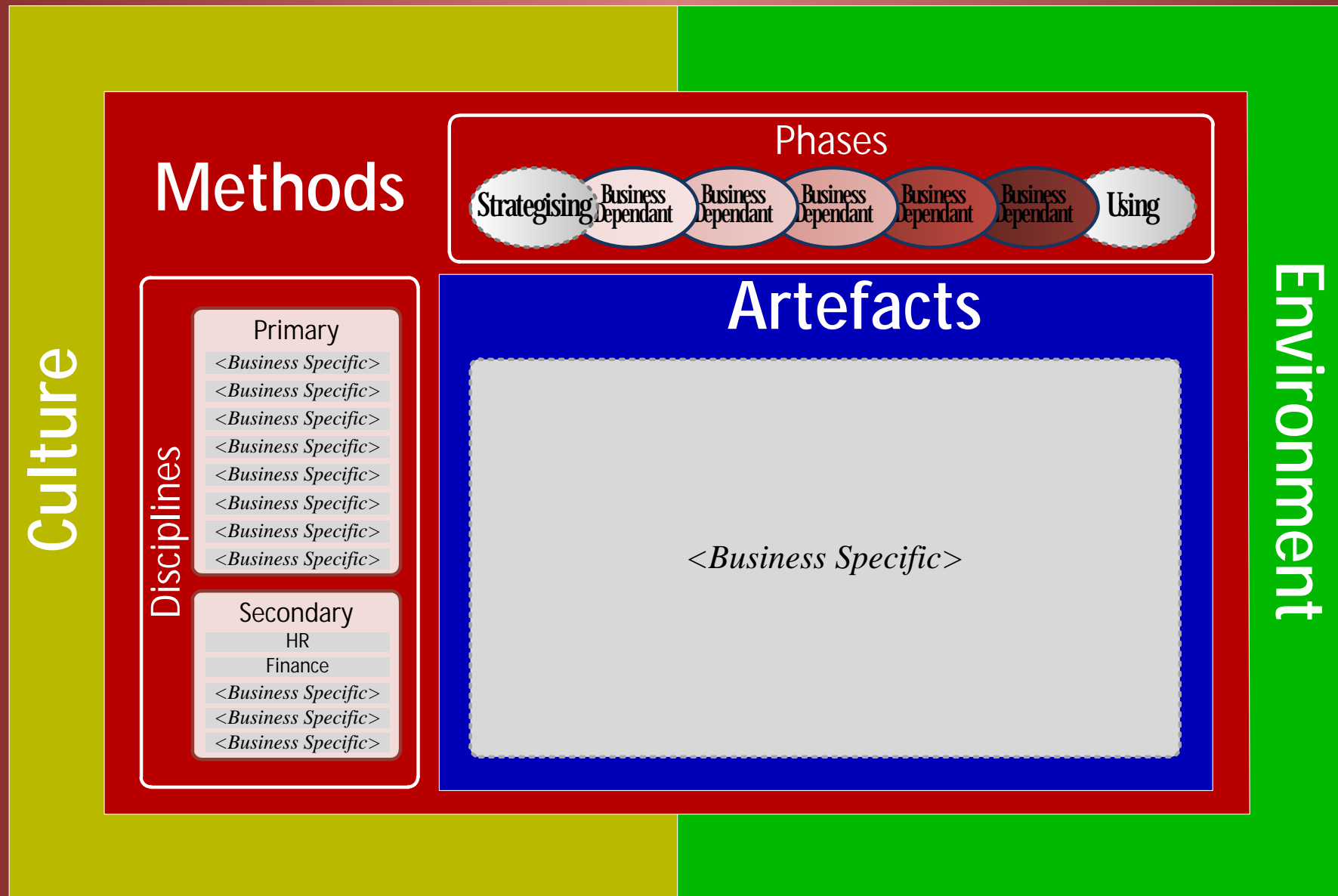


# Direction Operating Model

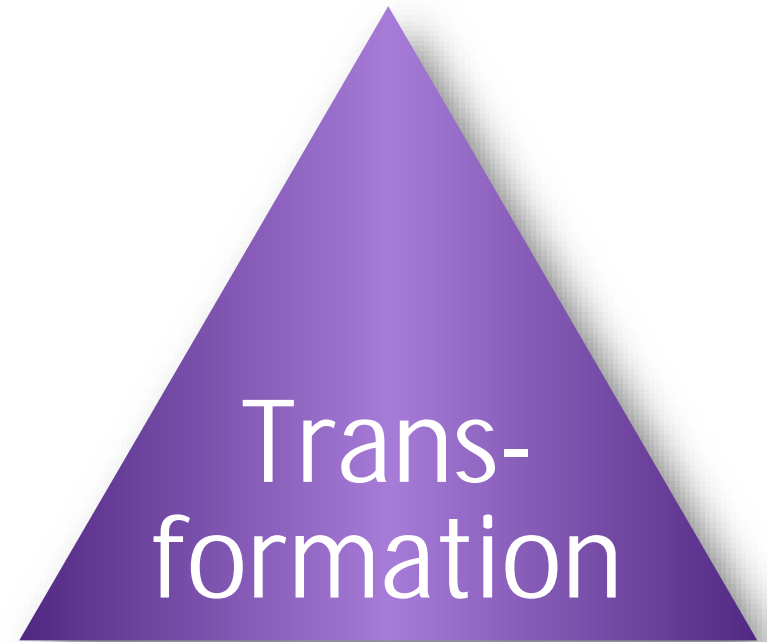




# Operation Operating Model

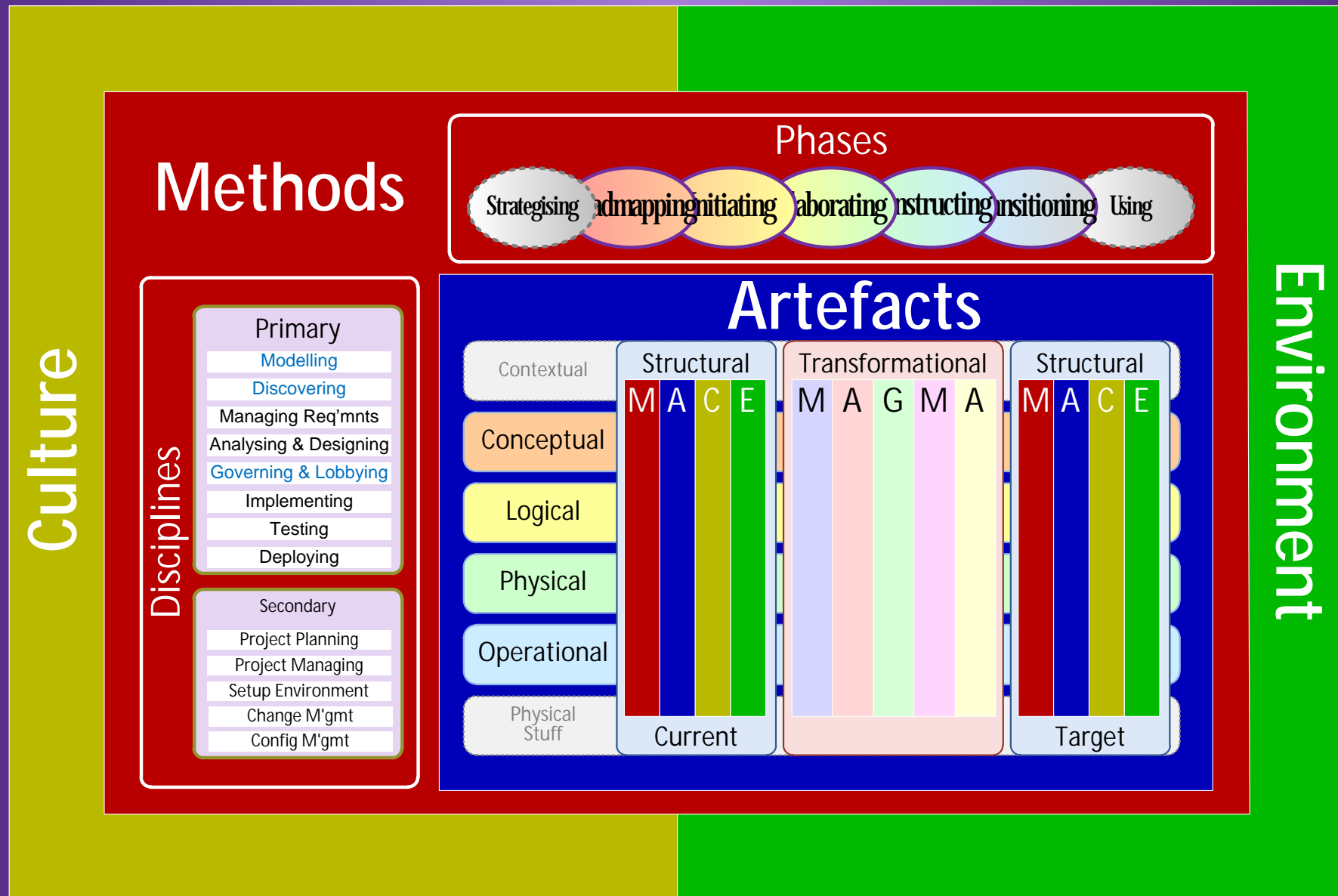


PF<sup>2</sup>

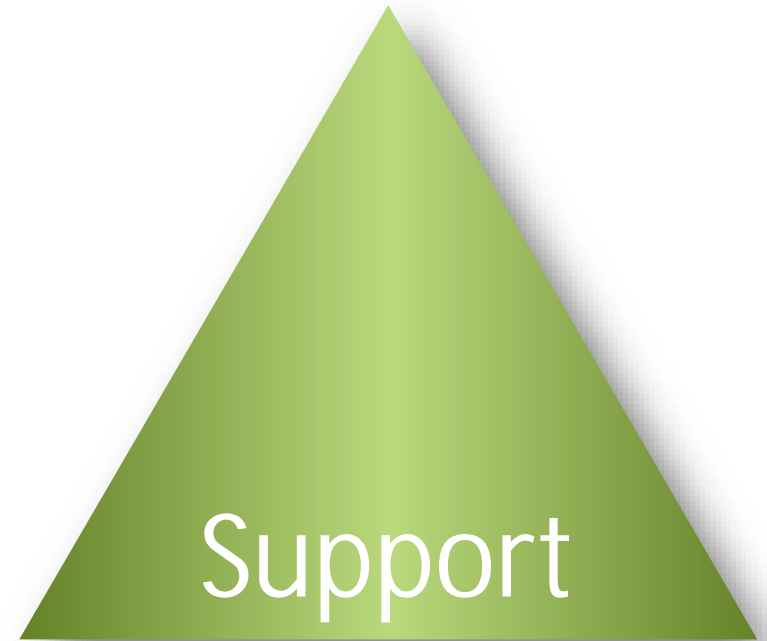


PODET<sup>TM</sup>

# Transformation Operating Model



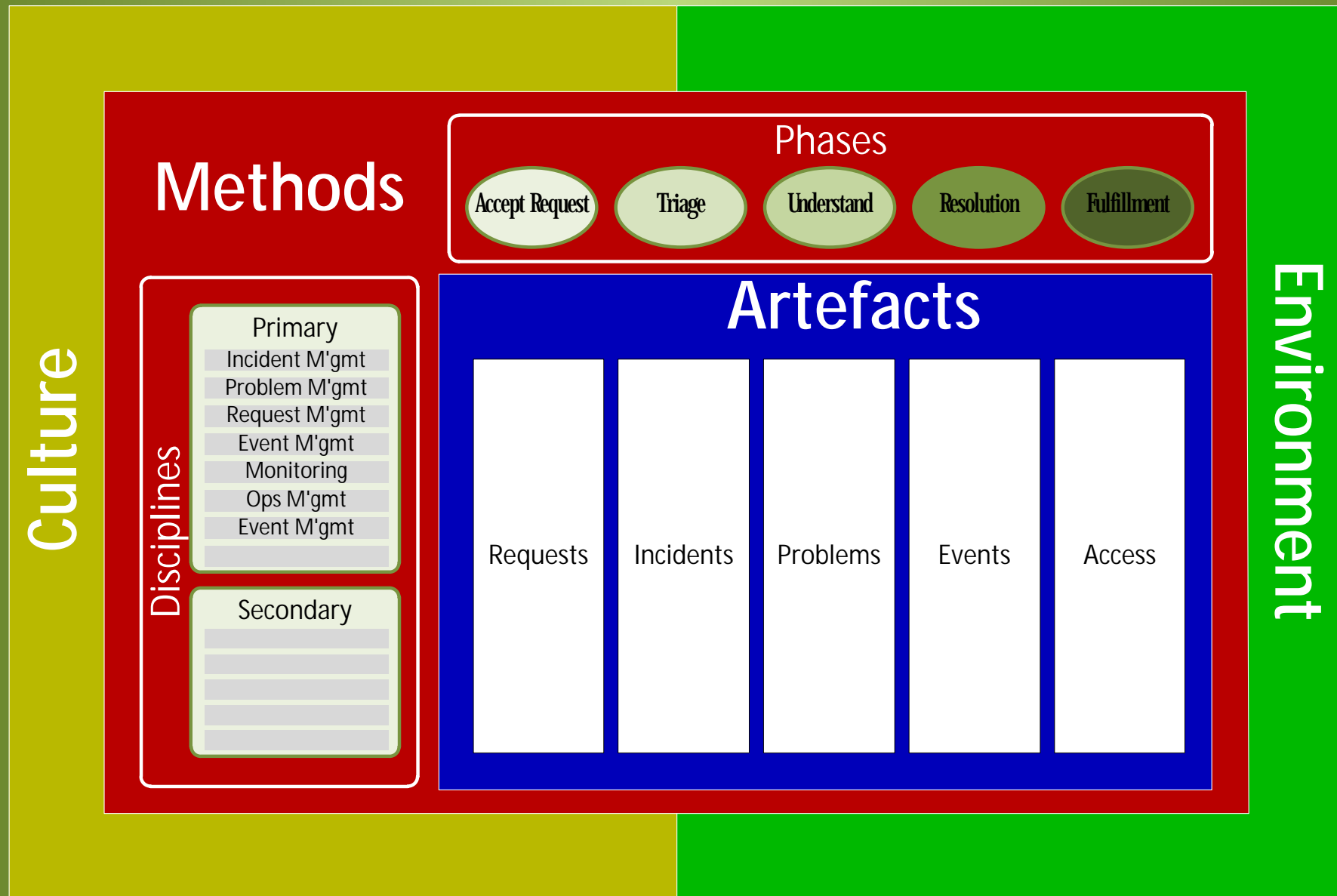
PF<sup>2</sup>



POE S™

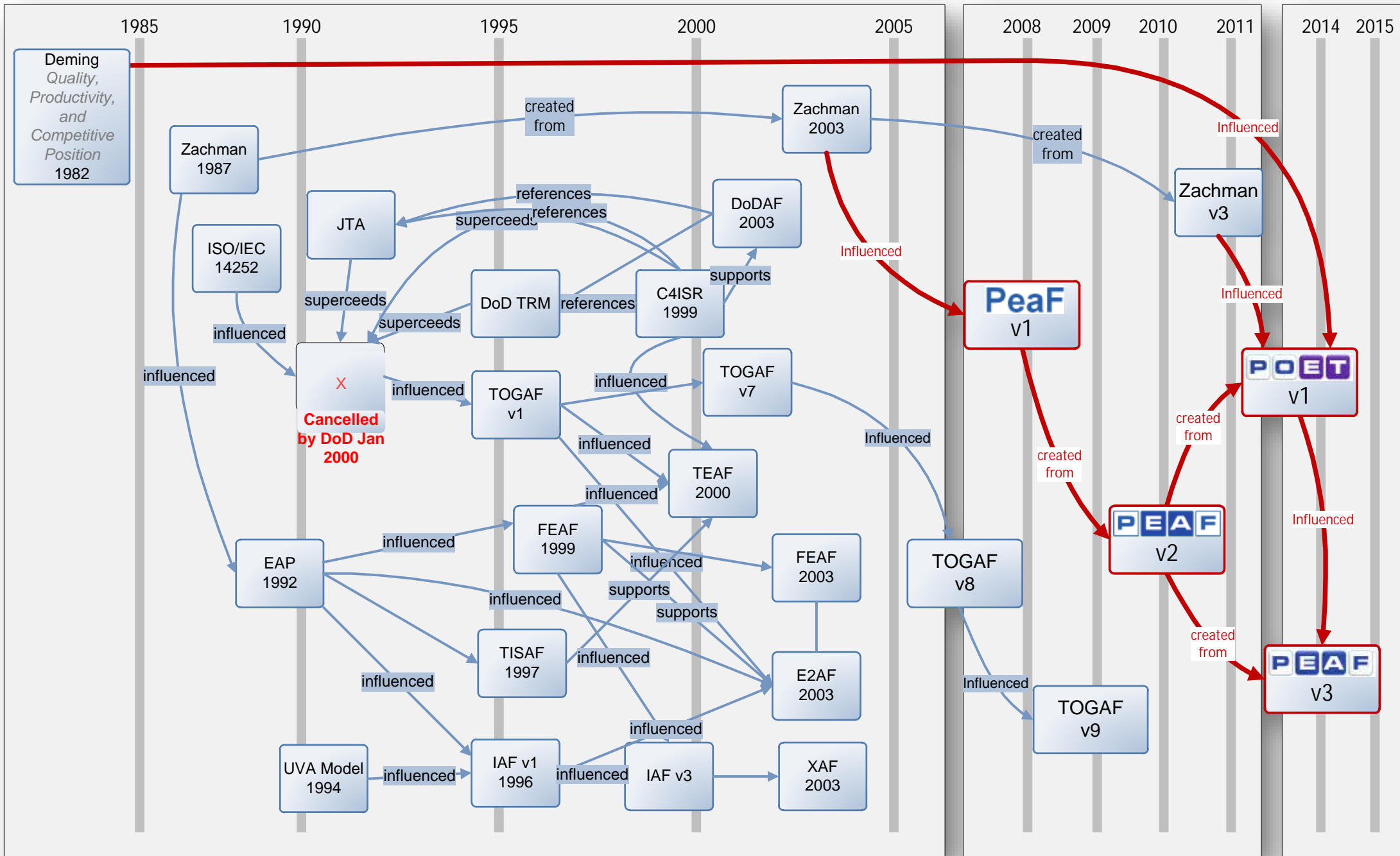


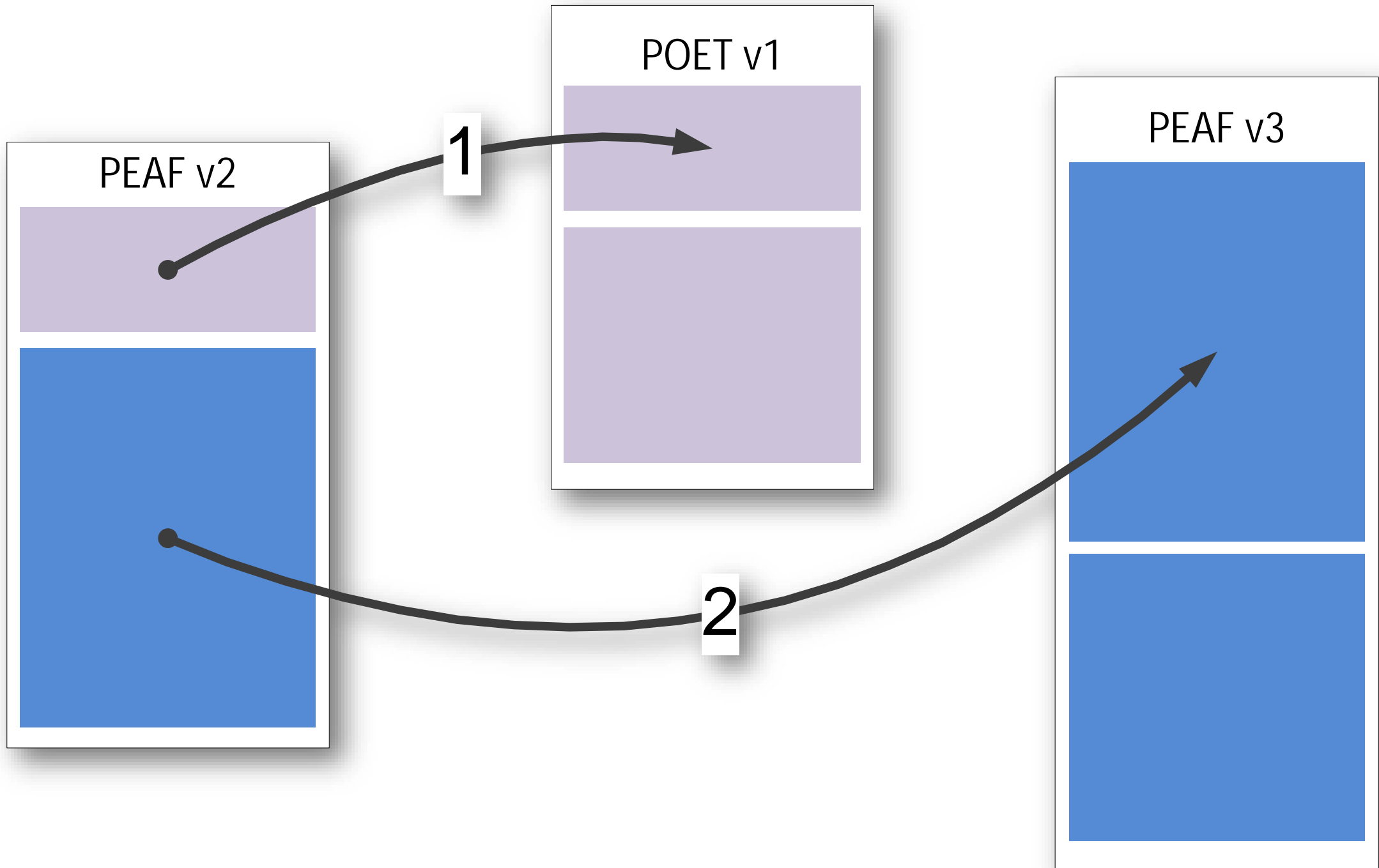
# Support Operating Model





# Introduction POET & PEAf > Influences





# APPENDIX



## WHY?

- We Care About Enterprises
- We Care About the People who Direct, Operate, Transform and Support Enterprises

## WHERE?

- Born from Observing Failure

## WHEN?

- PEAFF v1 Released 2008 (v3 2014)
- POET v1 Released 2014

## WHAT?

- Common Sense. Logic, Architecture, Engineering, Altruism, Honesty Integrity, Persistence, Passion

## HOW?

- 150,000 Hours Thinking, 20,000 Hours Creating

## WHO?

- Kevin Lee Smith
- 35+ Years in all phases of Enterprise Transformation
- Belbin: Plant     ▪ DISC: (7414) Result-Oriented
- MBTI: (INTJ) Independent, Individualistic, Visionary





## Sources

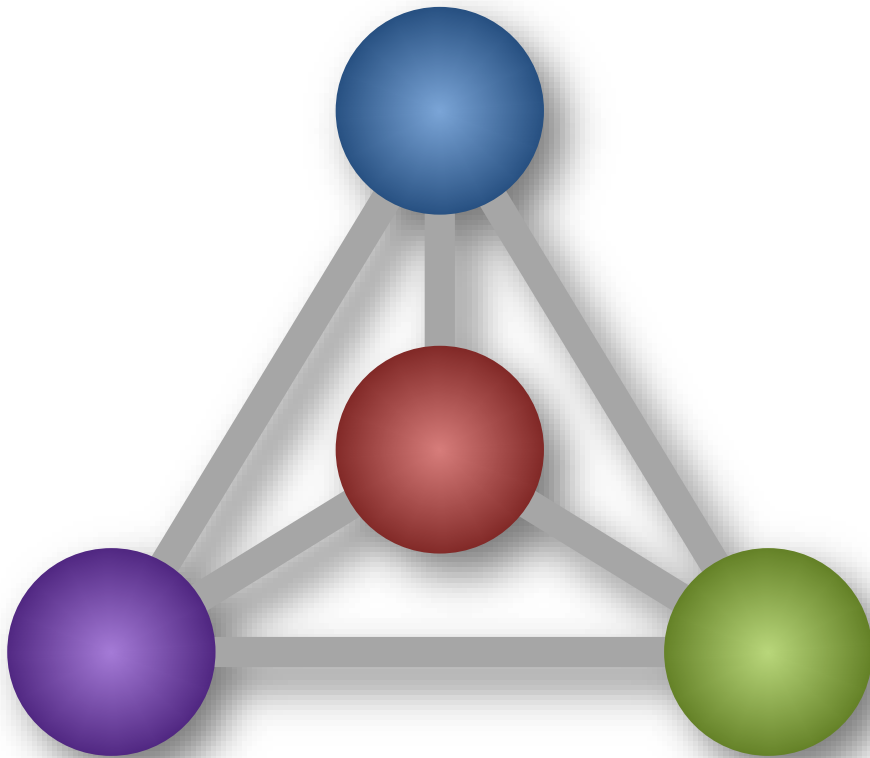
- Book cover: Tropical Storm Lee - NASA/NOAA GOES Project Science Team.
- Stereogram used on “Hitting the Wall” produced by Easy Stereogram Builder - [www.easystereogrambuilder.com](http://www.easystereogrambuilder.com)
- “Brain Function with gears and cogs” used on the “Slaves to Psychology” graphic from BigStock - [www.bigstockphoto.com/search/digitalista](http://www.bigstockphoto.com/search/digitalista)
- Technical Debt - [www.wikipedia.org/wiki/Technical\\_debt](http://www.wikipedia.org/wiki/Technical_debt)
- Zachman Framework - [www.wikipedia.org/wiki/Zachman\\_Framework](http://www.wikipedia.org/wiki/Zachman_Framework)
- TOGAF (The Open Group Architecture Framework) - [www.opengroup.org/togaf/](http://www.opengroup.org/togaf/)
- Business Motivation Model - [www.omg.org/spec/BMM/](http://www.omg.org/spec/BMM/)
- Enhanced Business Motivation Model - [www.MotivationModel.com](http://www.MotivationModel.com)
- ITIL (IT Infrastructure Library) - [www.itil-officialsite.com](http://www.itil-officialsite.com)
- COBIT (Control Objectives for Information and Related Technology) - [www.wikipedia.org/wiki/Cobit](http://www.wikipedia.org/wiki/Cobit)

## Resources

- The **Pragmatic** EA website [www.PragmaticEA.com](http://www.PragmaticEA.com) is the official source for all PF<sup>2</sup> related materials.

# Pragmatic

ENTERPRISE ARCHITECTURE



Connecting  
the DOTS

